

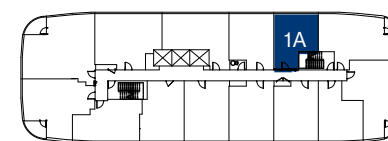
**1A**

**502 SQ.FT.**

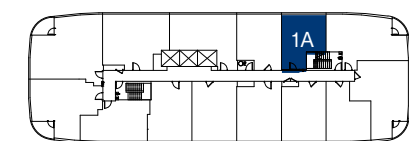
**1 BEDROOM 1 BATHROOM**

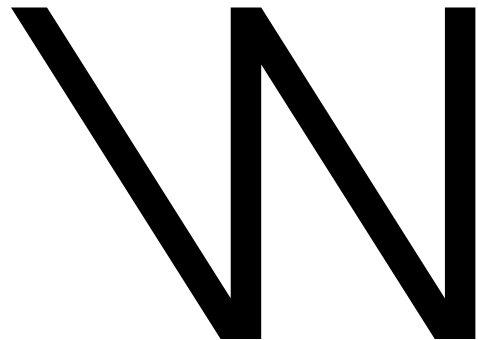
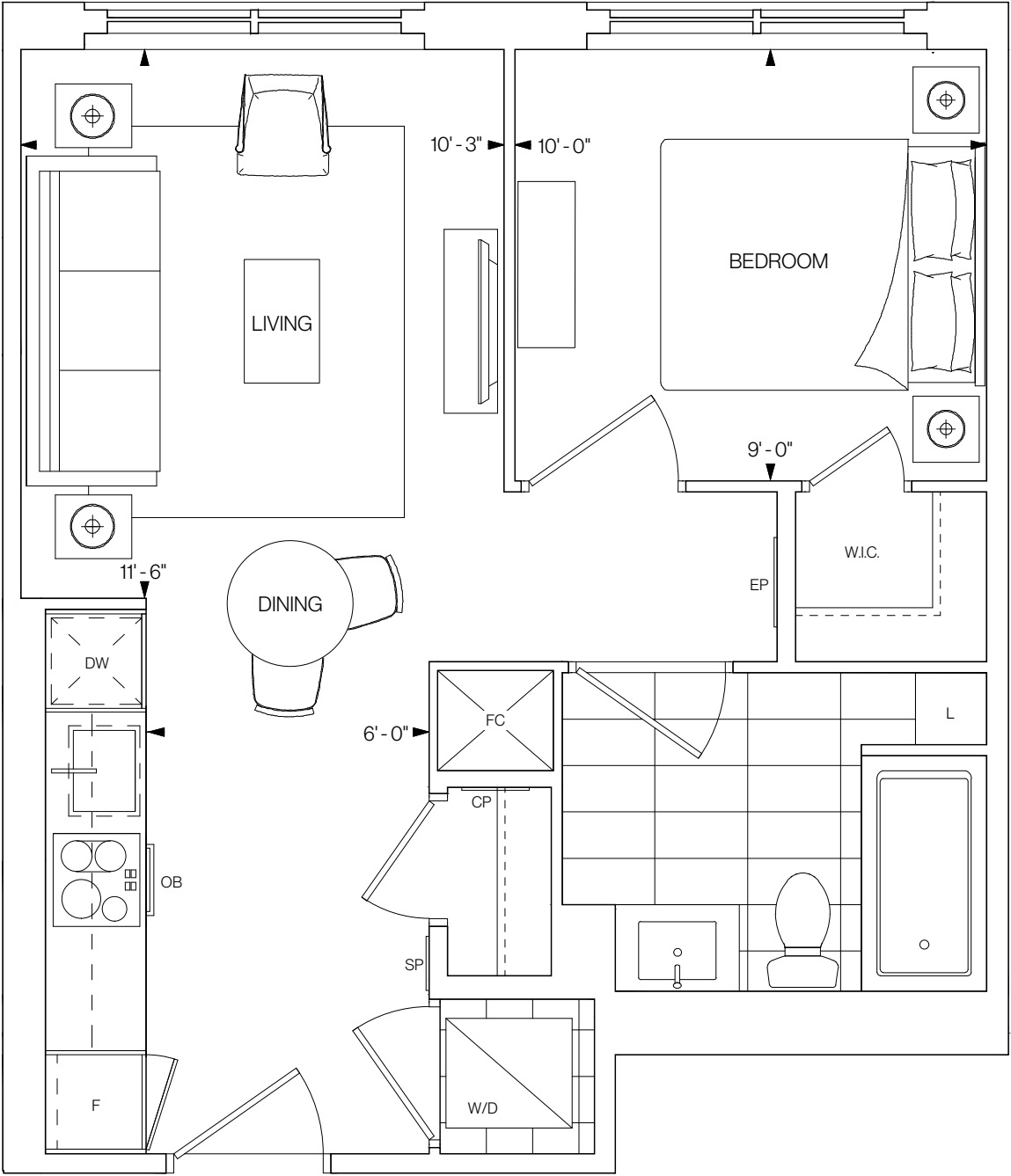
**NORTHEAST FACING**

FLOOR 6



FLOORS 7-12





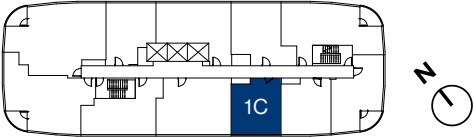
1C

509 SQ.FT.

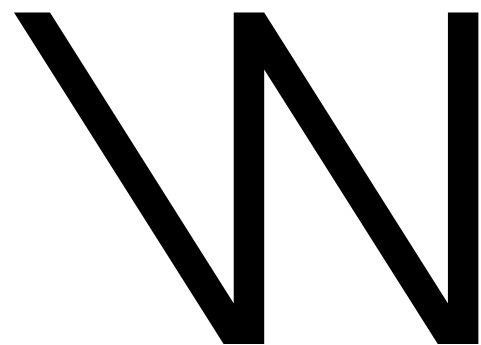
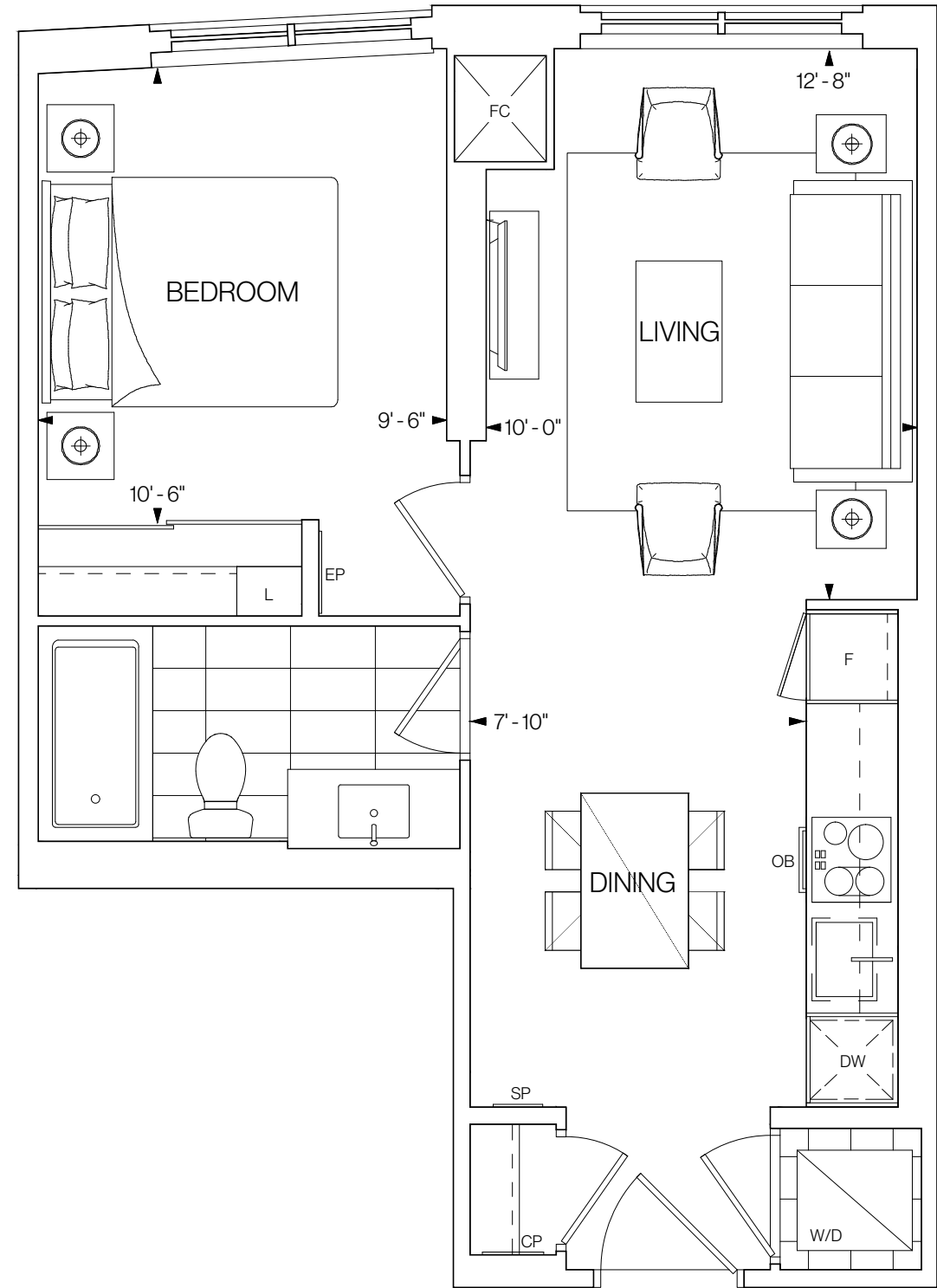
1 BEDROOM 1 BATHROOM

SOUTHWEST FACING

FLOORS 14-20



©Tridel 2020. \*Tridel, "D" design, Tridel Built for Life and Tridel Built for Life Design are registered Trademarks of Tridel Corporation. Project names and logos are Trademarks of their respective owners. All rights reserved. Buildings and views not to scale. All dimensions are approximate and subject to normal construction variances. Dimensions may exceed the usable floor area. Sizes and specifications subject to change without notice. Actual usable floor space may vary from the stated floor area. Furniture is displayed for illustration purposes only and does not necessarily reflect the electrical plan for the suite. Suites are sold unfurnished. Balcony, terrace and façade variations may apply, contact a sales representative for further details. Illustrations are artist's concept only. Prices and specifications subject to change without notice. E.&O.E. October 2020.



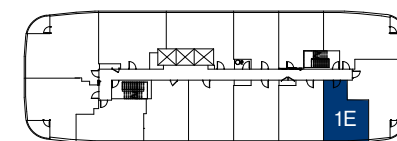
1E

536 SQ.FT.

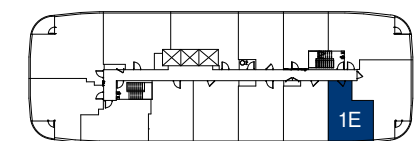
1 BEDROOM 1 BATHROOM

SOUTHWEST FACING

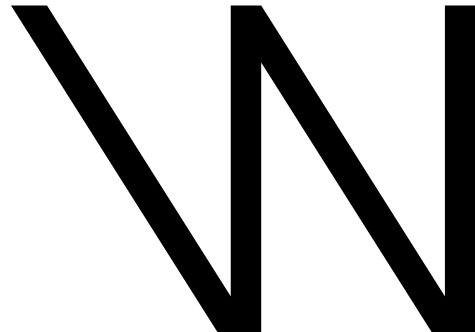
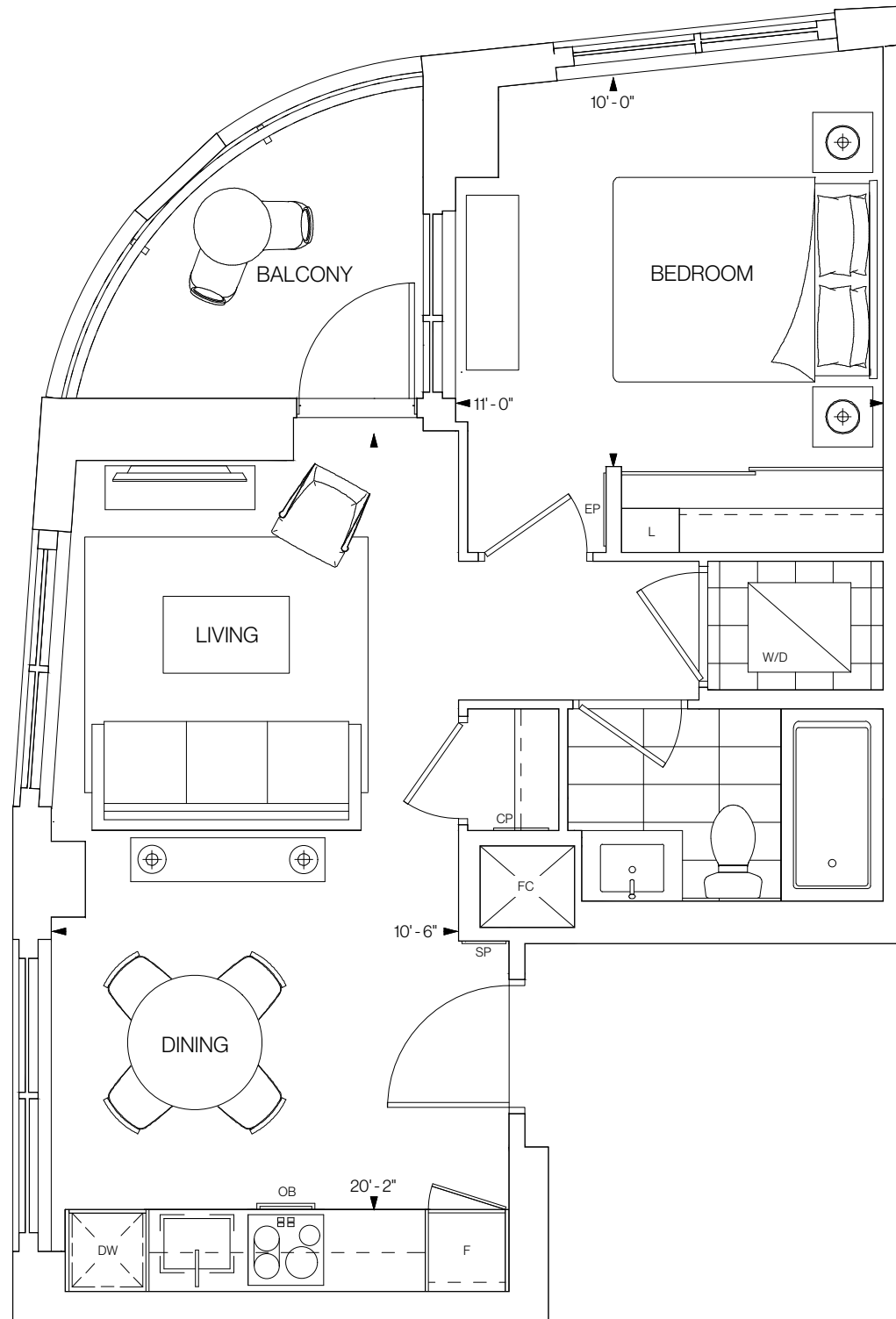
FLOOR 6



FLOORS 7-12



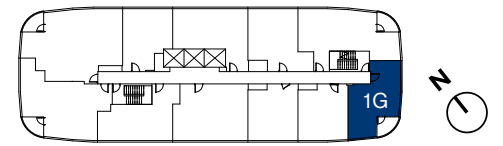
©Tridel 2020. \*Tridel, "D" design, Tridel Built for Life and Tridel Built for Life Design are registered Trademarks of Tridel Corporation. Project names and logos are Trademarks of their respective owners. All rights reserved. Buildings and views not to scale. All dimensions are approximate and subject to normal construction variances. Dimensions may exceed the usable floor area. Sizes and specifications subject to change without notice. Actual usable floor space may vary from the stated floor area. Furniture is displayed for illustration purposes only and does not necessarily reflect the electrical plan for the suite. Suites are sold unfurnished. Balcony, terrace and façade variations may apply, contact a sales representative for further details. Illustrations are artist's concept only. Prices and specifications subject to change without notice. E.&O.E. October 2020.



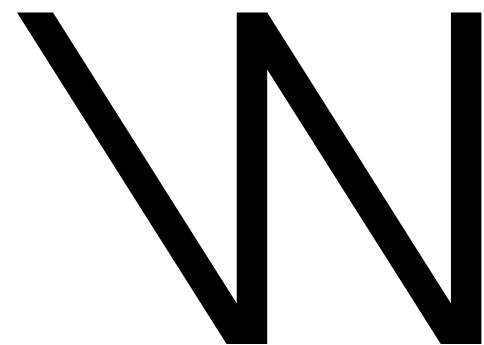
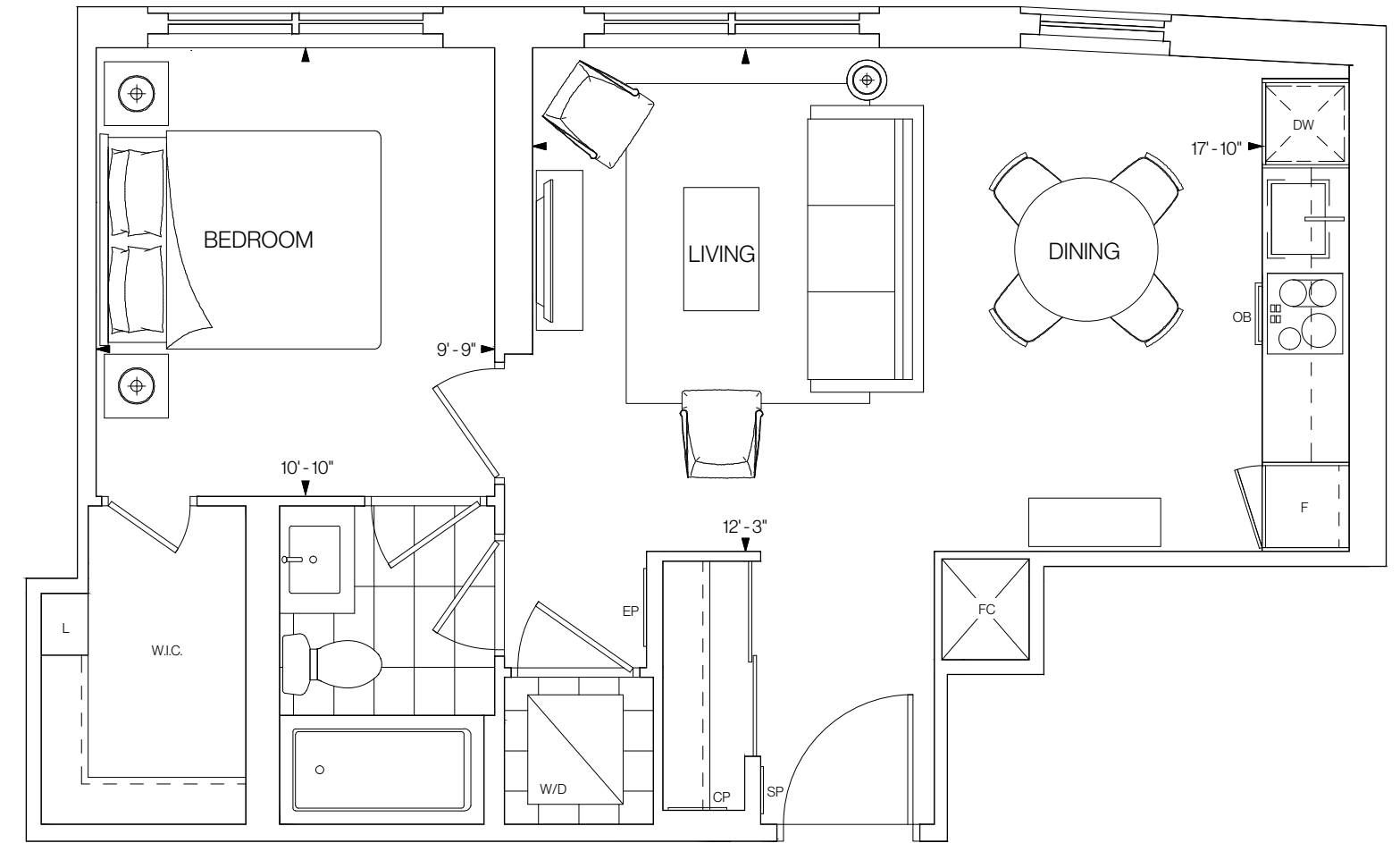
**1G**

**576 SQ.FT.**  
**1 BEDROOM 1 BATHROOM**  
**SOUTH FACING**

FLOORS 14-20



©Tridel 2020. \*Tridel, "D" design, Tridel Built for Life and Tridel Built for Life Design are registered Trademarks of Tridel Corporation. Project names and logos are Trademarks of their respective owners. All rights reserved. Buildings and views not to scale. All dimensions are approximate and subject to normal construction variances. Dimensions may exceed the usable floor area. Sizes and specifications subject to change without notice. Actual usable floor space may vary from the stated floor area. Furniture is displayed for illustration purposes only and does not necessarily reflect the electrical plan for the suite. Suites are sold unfurnished. Balcony, terrace and façade variations may apply, contact a sales representative for further details. Illustrations are artist's concept only. Prices and specifications subject to change without notice. E.&O.E. October 2020.



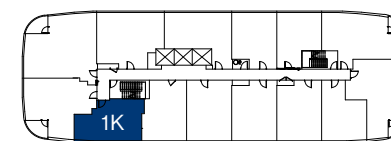
**1K**

**603 SQ.FT.**

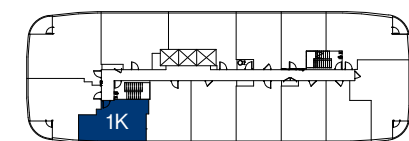
**1 BEDROOM 1 BATHROOM**

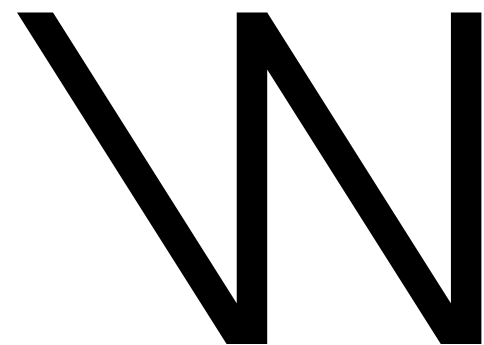
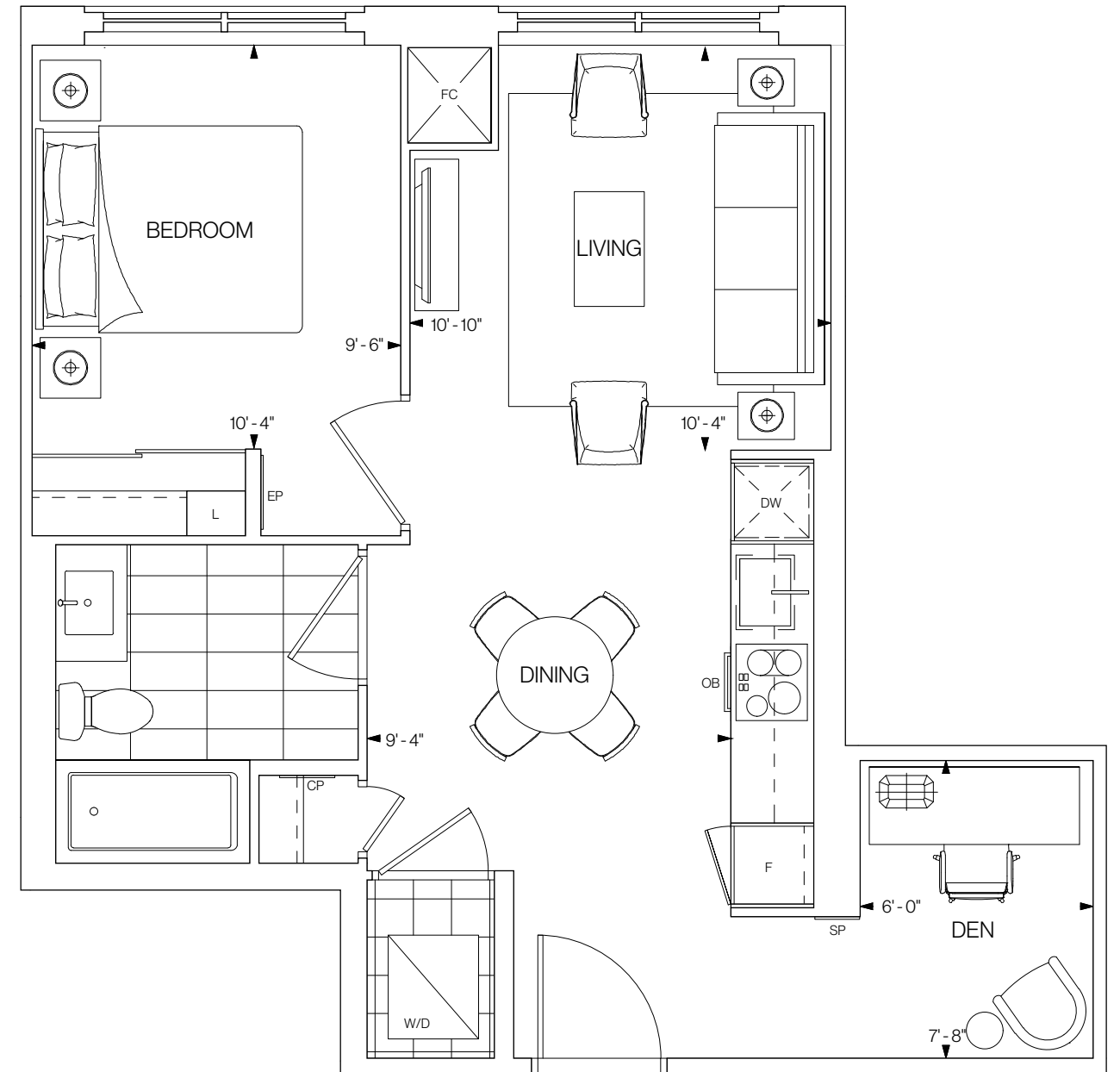
**SOUTHWEST FACING**

FLOOR 6



FLOORS 7-12





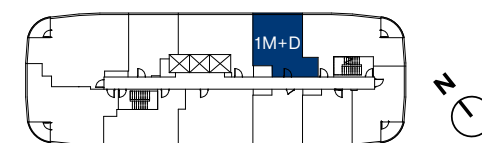
# 1M+D

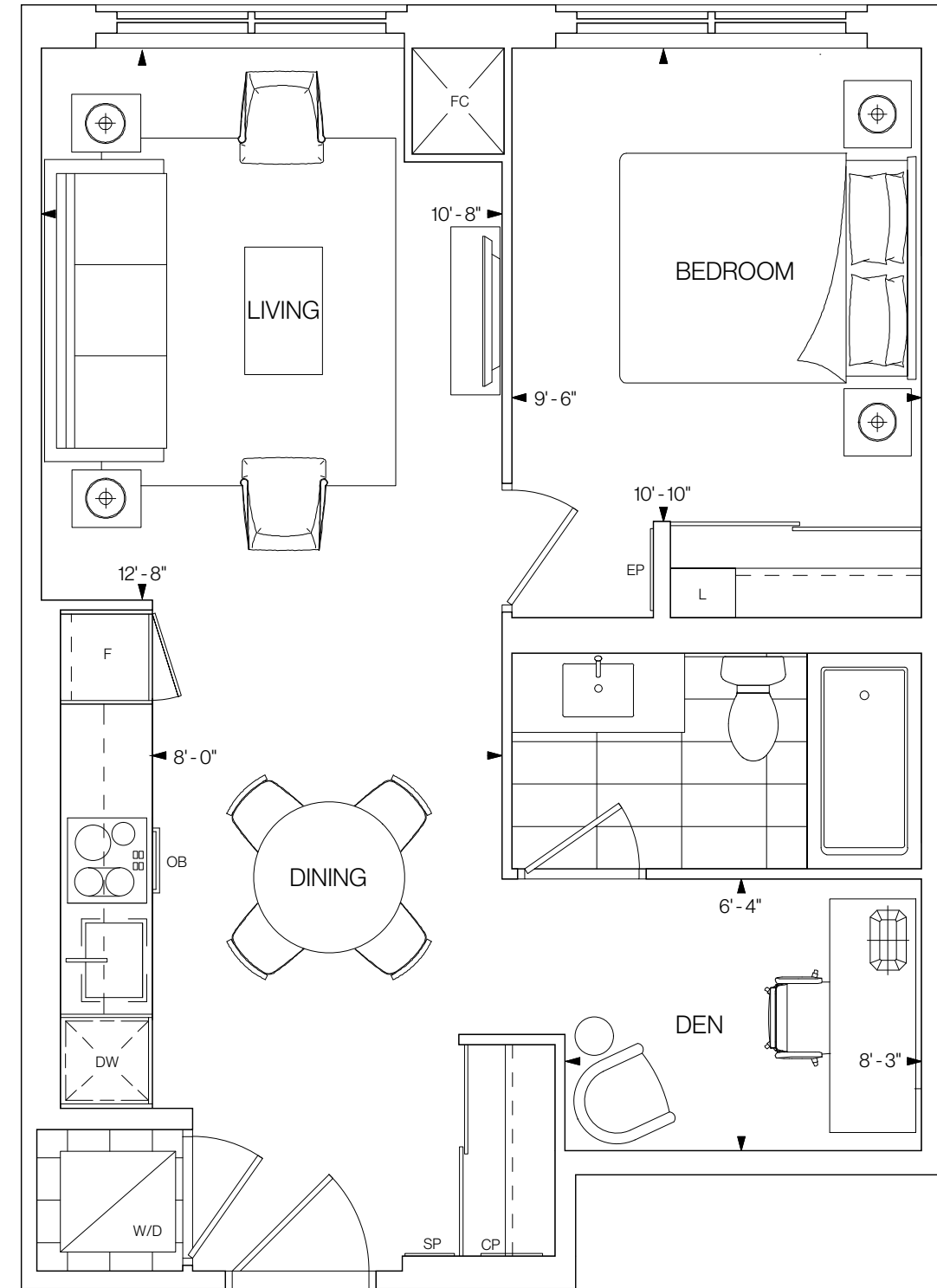
**604 SQ.FT.**

**1 BEDROOM+DEN 1 BATHROOM**

**NORTHEAST FACING**

FLOORS 14-20





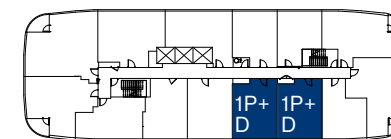
# 1P+D

614 SQ.FT.

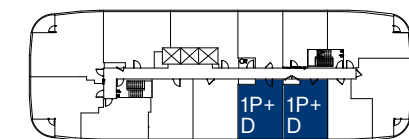
1 BEDROOM+DEN 1 BATHROOM

**SOUTHWEST FACING**

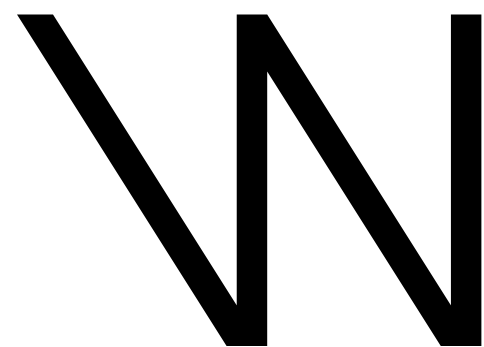
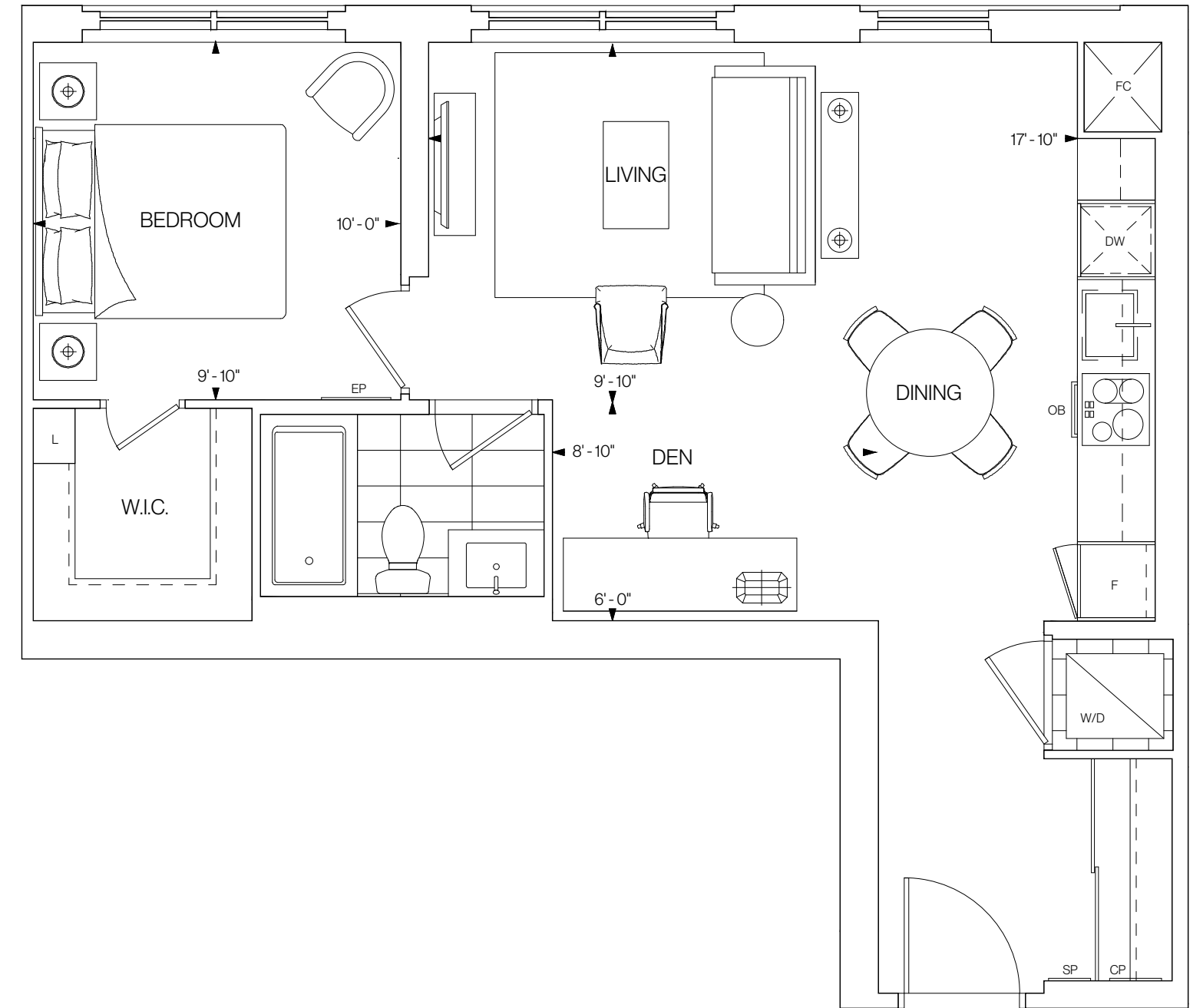
FLOOR 6



FLOORS 7-12



©Tridel 2020. \*Tridel, "D" design, Tridel Built for Life and Tridel Built for Life Design are registered Trademarks of Tridel Corporation. Project names and logos are Trademarks of their respective owners. All rights reserved. Buildings and views not to scale. All dimensions are approximate and subject to normal construction variances. Dimensions may exceed the usable floor area. Sizes and specifications subject to change without notice. Actual usable floor space may vary from the stated floor area. Furniture is displayed for illustration purposes only and does not necessarily reflect the electrical plan for the suite. Suites are sold unfurnished. Balcony, terrace and façade variations may apply, contact a sales representative for further details. Illustrations are artist's concept only. Prices and specifications subject to change without notice. E.&O.E. October 2020.



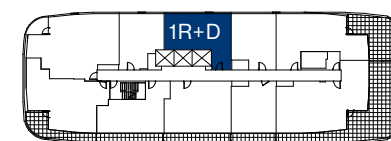
# 1R+D

665 SQ.FT.

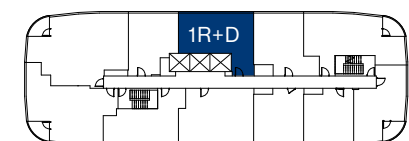
1 BEDROOM+DEN 1 BATHROOM

NORTHEAST FACING

FLOOR 13

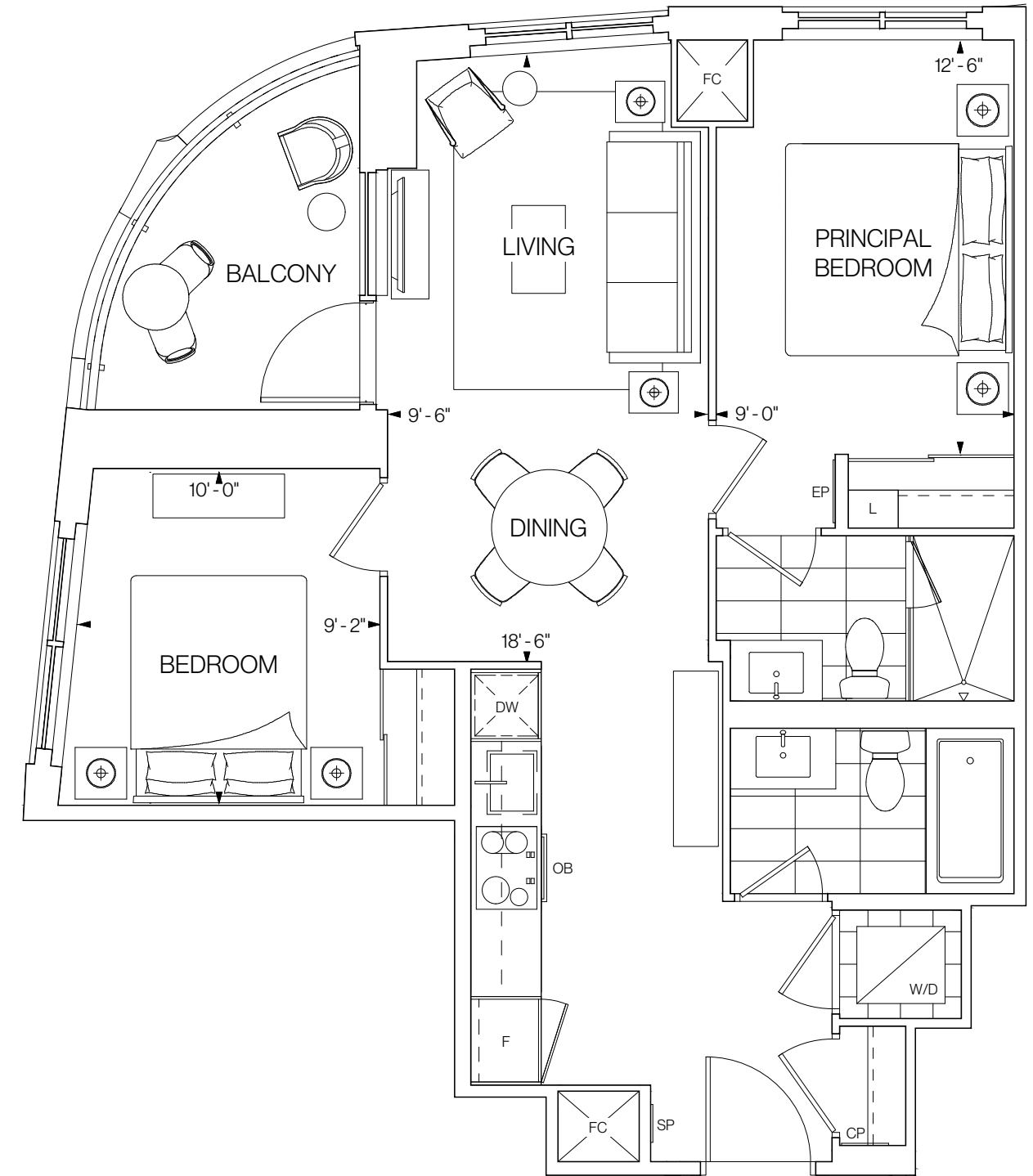


FLOORS 14-20



©Tridel 2020. \*Tridel, "D" design, Tridel Built for Life and Tridel Built for Life Design are registered Trademarks of Tridel Corporation. Project names and logos are Trademarks of their respective owners. All rights reserved. Buildings and views not to scale. All dimensions are approximate and subject to normal construction variances. Dimensions may exceed the usable floor area. Sizes and specifications subject to change without notice. Actual usable floor space may vary from the stated floor area. Furniture is displayed for illustration purposes only and does not necessarily reflect the electrical plan for the suite. Suites are sold unfurnished. Balcony, terrace and façade variations may apply, contact a sales representative for further details. Illustrations are artist's concept only. Prices and specifications subject to change without notice. E.&O.E. October 2020.

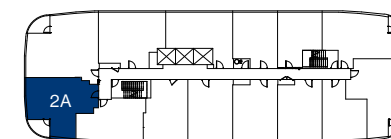




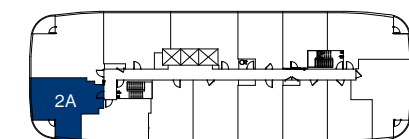
# W 2A

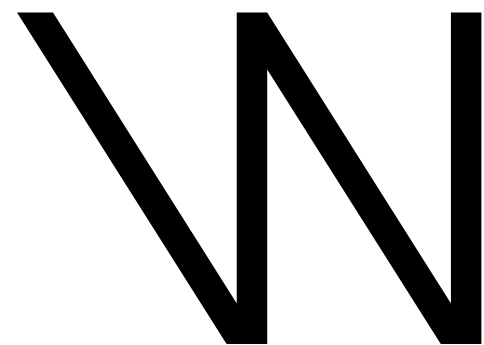
**769 SQ.FT.**  
**2 BEDROOMS 2 BATHROOMS**  
**WEST FACING**

FLOOR 6



FLOORS 7-12



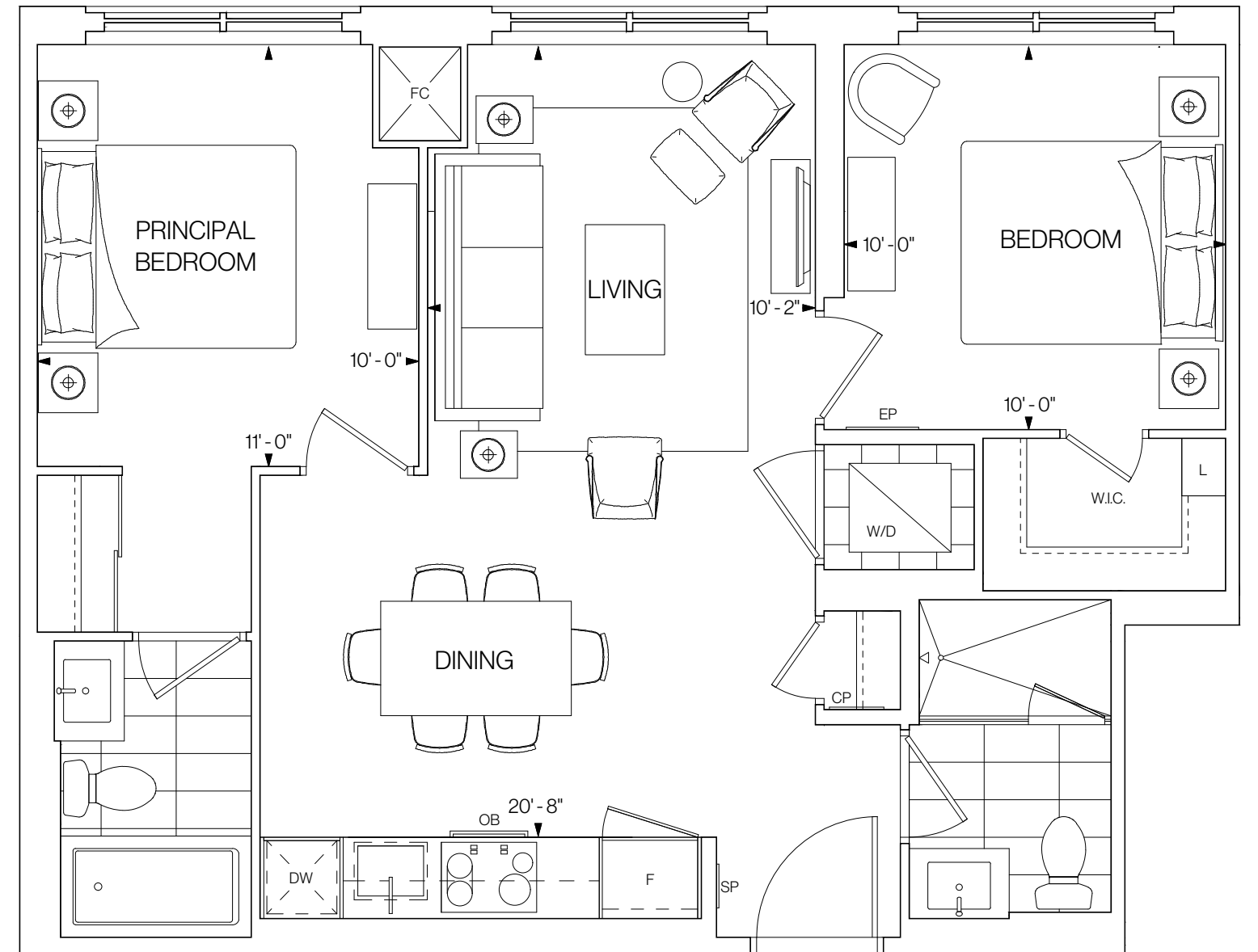


# 2B

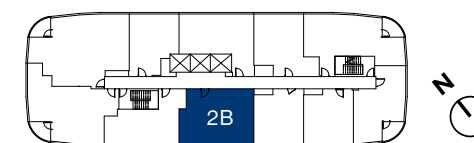
769 SQ.FT.

2 BEDROOMS 2 BATHROOMS

SOUTHWEST FACING



FLOORS 14-20



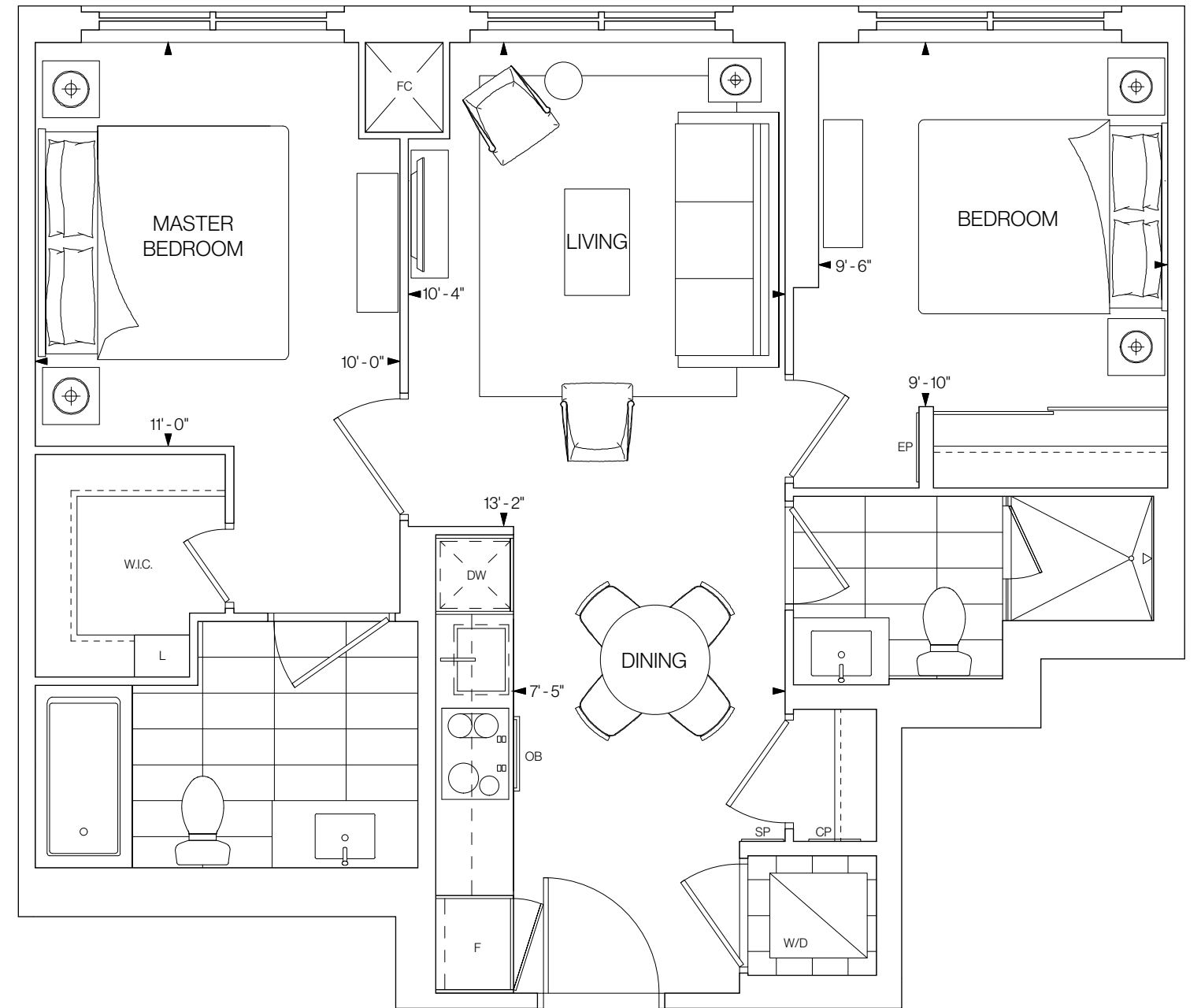
©Tridel 2020. \*Tridel, "D" design, Tridel Built for Life and Tridel Built for Life Design are registered Trademarks of Tridel Corporation. Project names and logos are Trademarks of their respective owners. All rights reserved. Buildings and views not to scale. All dimensions are approximate and subject to normal construction variances. Dimensions may exceed the usable floor area. Sizes and specifications subject to change without notice. Actual usable floor space may vary from the stated floor area. Furniture is displayed for illustration purposes only and does not necessarily reflect the electrical plan for the suite. Suites are sold unfurnished. Balcony, terrace and façade variations may apply, contact a sales representative for further details. Illustrations are artist's concept only. Prices and specifications subject to change without notice. E.&O.E. October 2020.

# W 2C

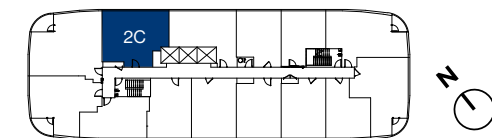
786 SQ.FT.

2 BEDROOMS 2 BATHROOMS

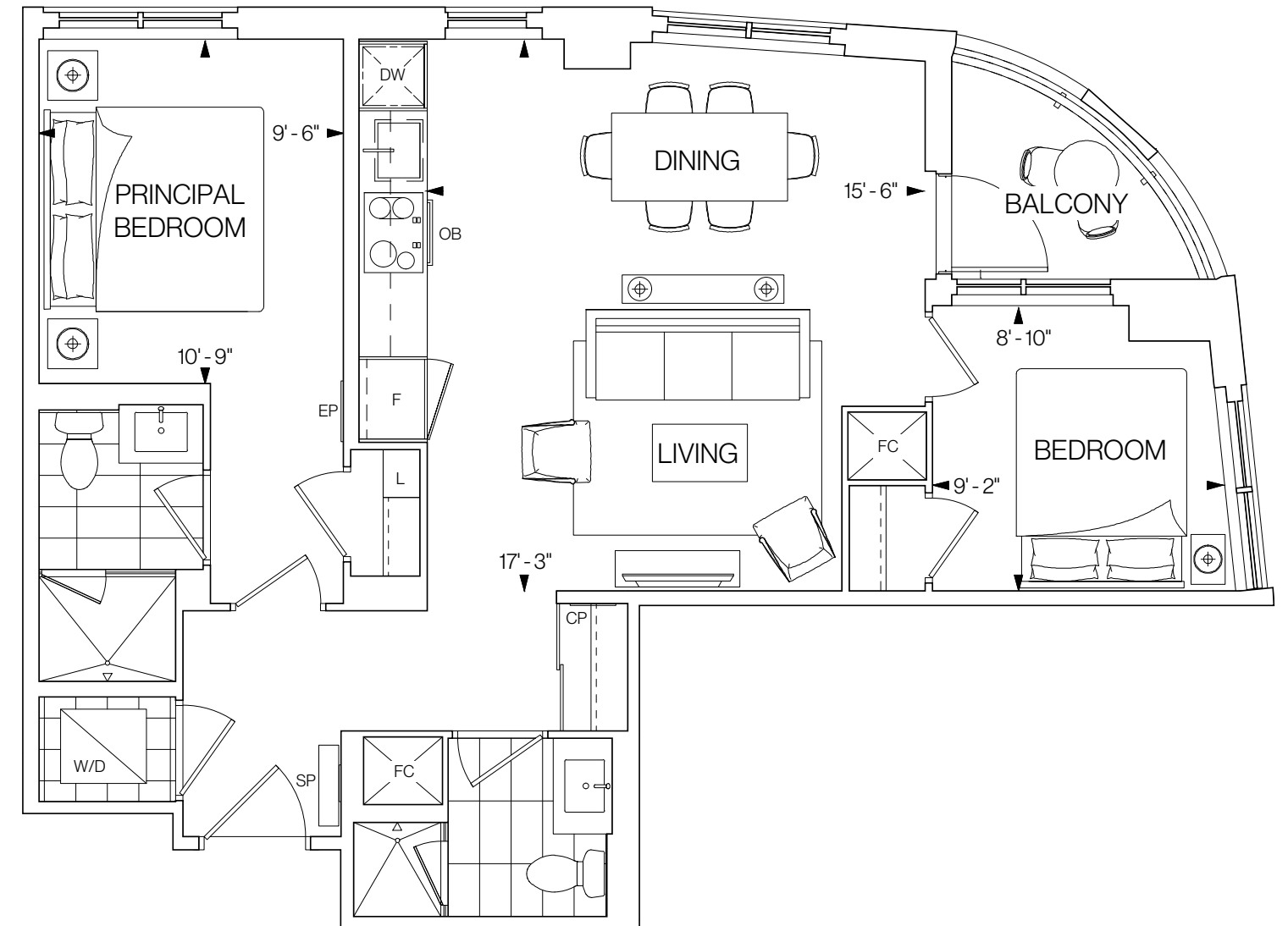
NORTHEAST FACING



FLOORS 7-12



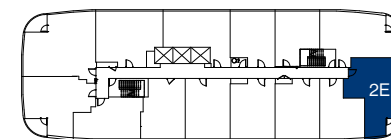
©Tridel 2020. \*Tridel, "D" design, Tridel Built for Life and Tridel Built for Life Design are registered Trademarks of Tridel Corporation. Project names and logos are Trademarks of their respective owners. All rights reserved. Buildings and views not to scale. All dimensions are approximate and subject to normal construction variances. Dimensions may exceed the usable floor area. Sizes and specifications subject to change without notice. Actual usable floor space may vary from the stated floor area. Furniture is displayed for illustration purposes only and does not necessarily reflect the electrical plan for the suite. Suites are sold unfurnished. Balcony, terrace and façade variations may apply, contact a sales representative for further details. Illustrations are artist's concept only. Prices and specifications subject to change without notice. E.&O.E. October 2020.



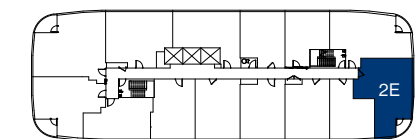
# W 2E

**800 SQ.FT.**  
**2 BEDROOMS 2 BATHROOMS**  
**SOUTH FACING**

FLOOR 6

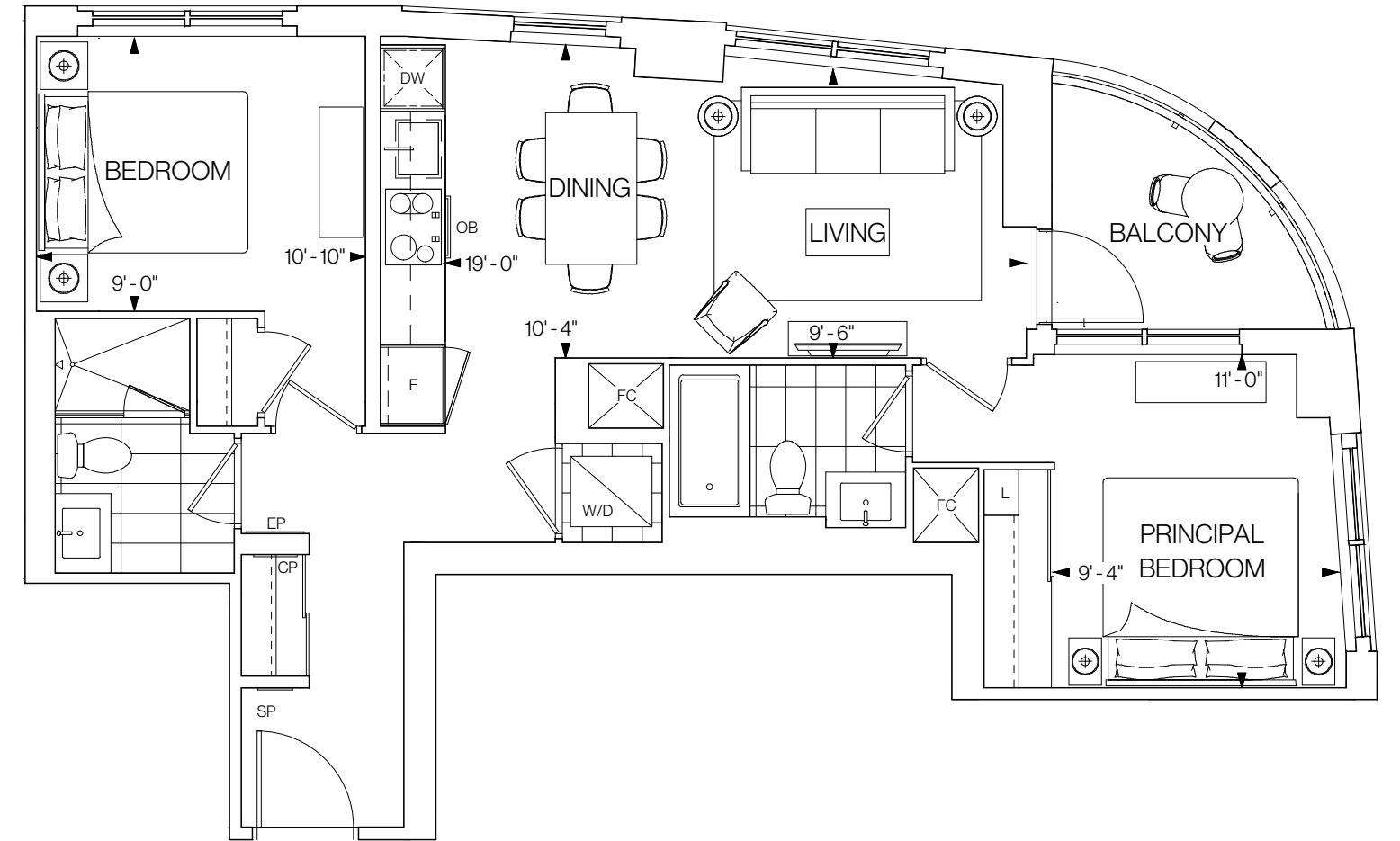


FLOORS 7-12

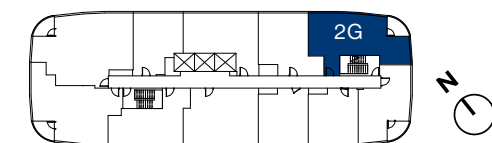


# W 2G

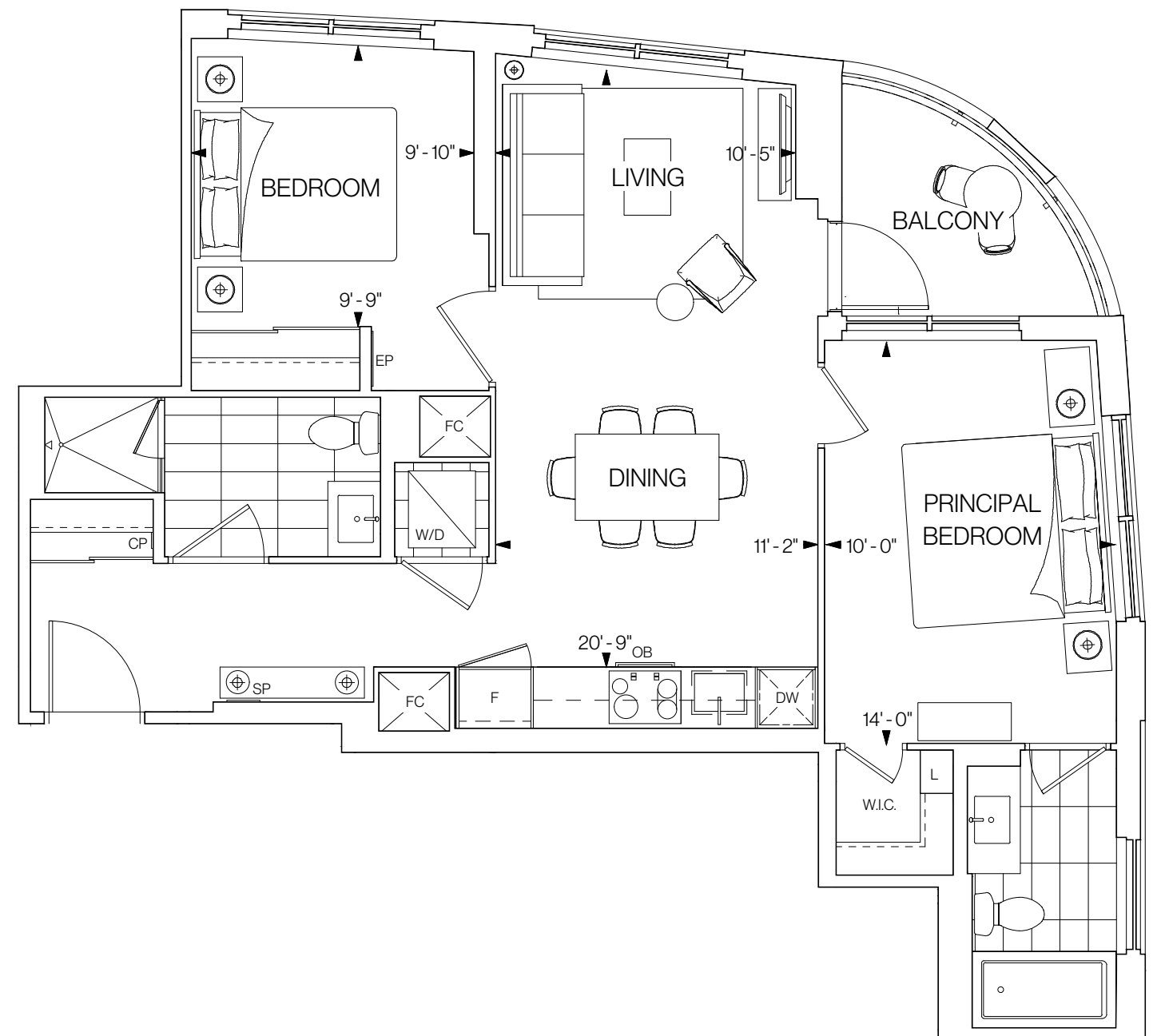
**818 SQ.FT.**  
**2 BEDROOMS 2 BATHROOMS**  
**EAST FACING**



FLOORS 14-20



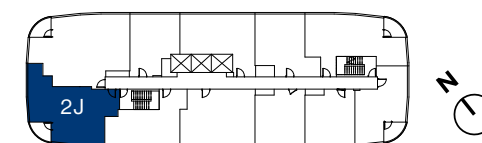
©Tridel 2020. \*Tridel, "D" design, Tridel Built for Life and Tridel Built for Life Design are registered Trademarks of Tridel Corporation. Project names and logos are Trademarks of their respective owners. All rights reserved. Buildings and views not to scale. All dimensions are approximate and subject to normal construction variances. Dimensions may exceed the usable floor area. Sizes and specifications subject to change without notice. Actual usable floor space may vary from the stated floor area. Furniture is displayed for illustration purposes only and does not necessarily reflect the electrical plan for the suite. Suites are sold unfurnished. Balcony, terrace and façade variations may apply, contact a sales representative for further details. Illustrations are artist's concept only. Prices and specifications subject to change without notice. E.&O.E. October 2020.



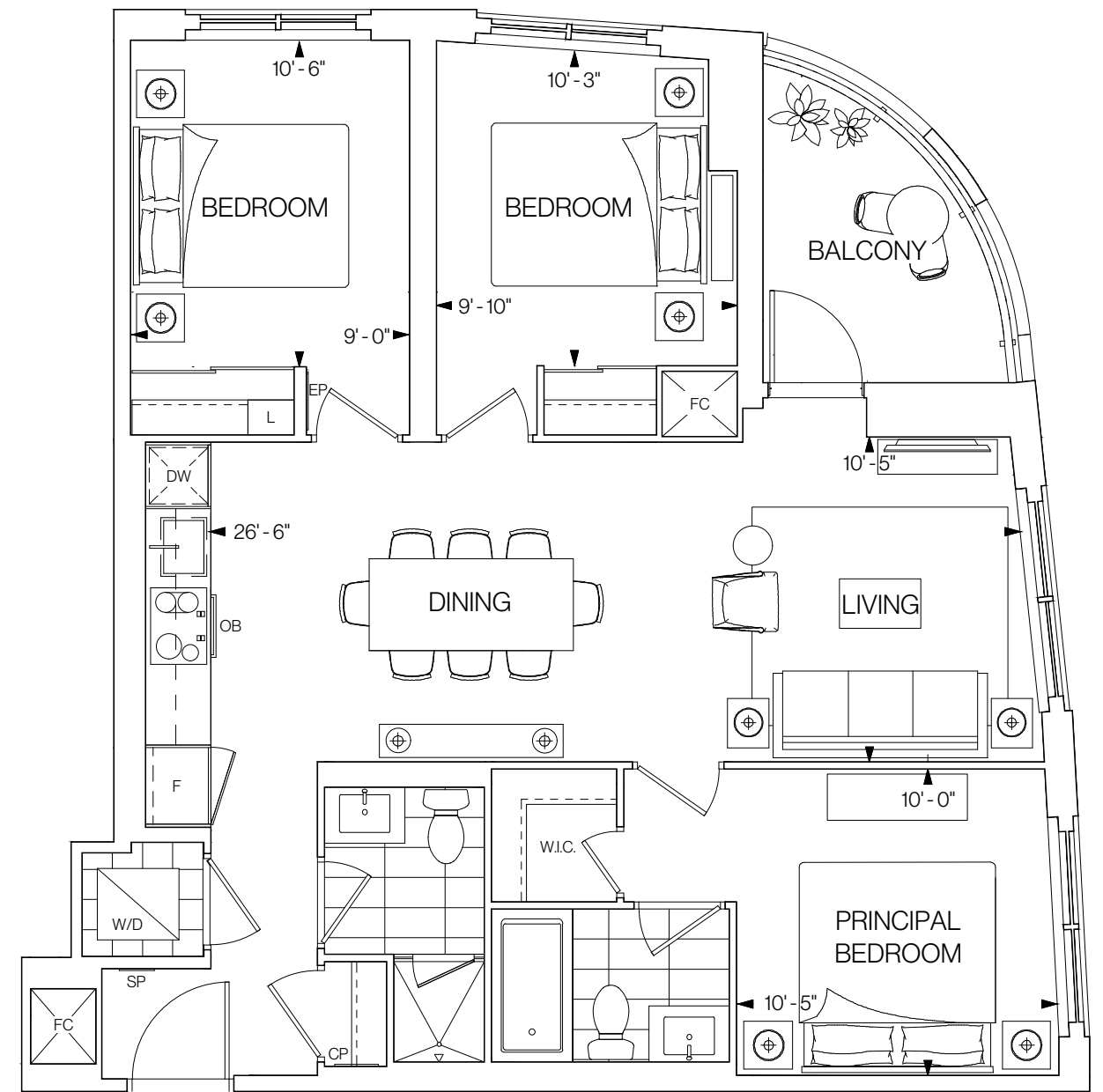
# W 2J

**889 SQ.FT.**  
**2 BEDROOMS 2 BATHROOMS**  
**WEST FACING**

FLOORS 14-20



©Tridel 2020. \*Tridel, "D" design, Tridel Built for Life and Tridel Built for Life Design are registered Trademarks of Tridel Corporation. Project names and logos are Trademarks of their respective owners. All rights reserved. Buildings and views not to scale. All dimensions are approximate and subject to normal construction variances. Dimensions may exceed the usable floor area. Sizes and specifications subject to change without notice. Actual usable floor space may vary from the stated floor area. Furniture is displayed for illustration purposes only and does not necessarily reflect the electrical plan for the suite. Suites are sold unfurnished. Balcony, terrace and façade variations may apply, contact a sales representative for further details. Illustrations are artist's concept only. Prices and specifications subject to change without notice. E.&O.E. October 2020.



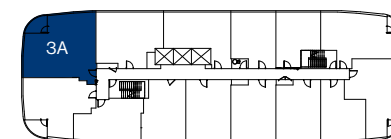
# N 3A

987 SQ.FT.

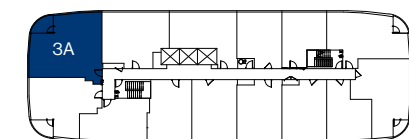
3 BEDROOMS 2 BATHROOMS

NORTH FACING

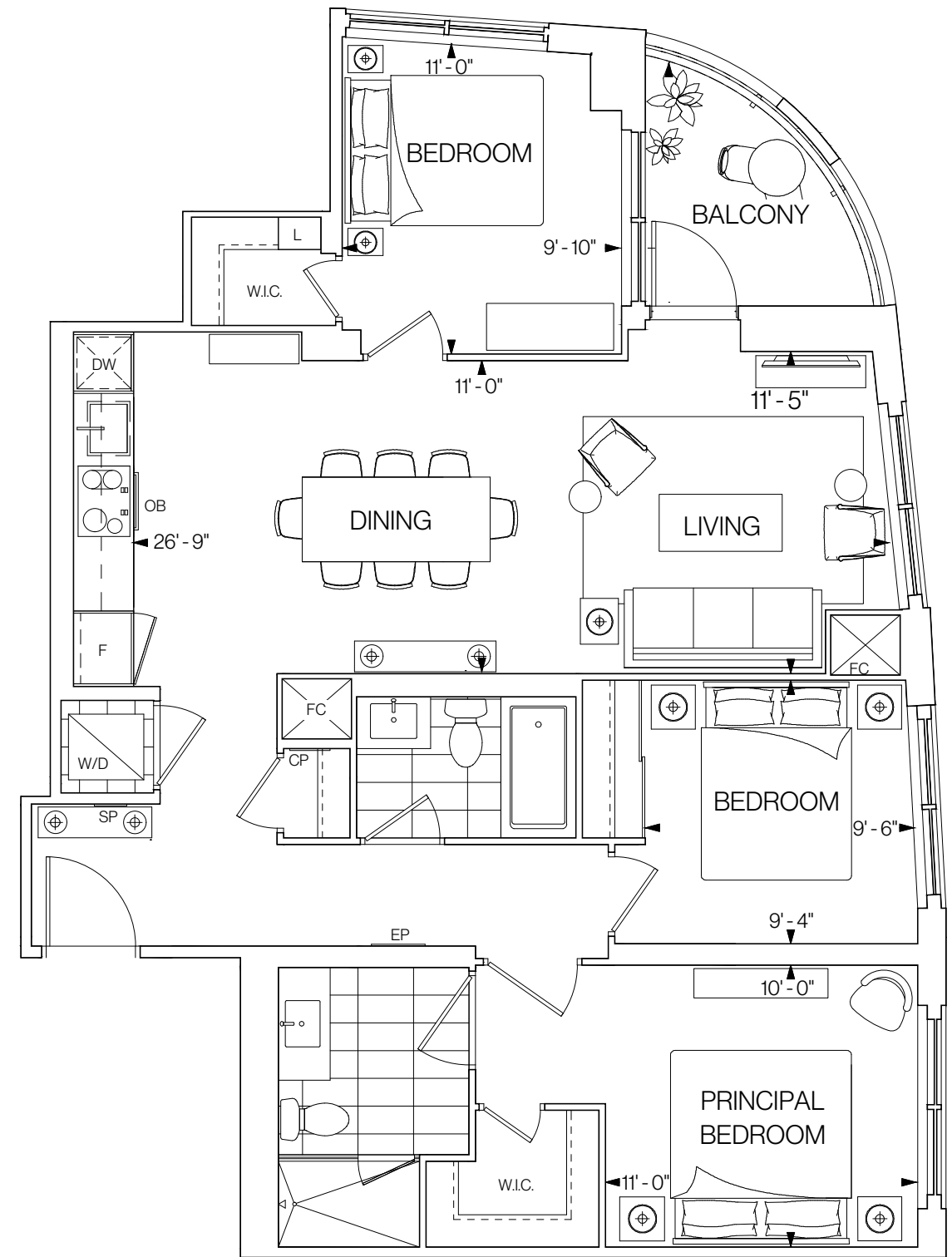
FLOOR 6



FLOORS 7-12



©Tridel 2020. \*Tridel, "D" design, Tridel Built for Life and Tridel Built for Life Design are registered Trademarks of Tridel Corporation. Project names and logos are Trademarks of their respective owners. All rights reserved. Buildings and views not to scale. All dimensions are approximate and subject to normal construction variances. Dimensions may exceed the usable floor area. Sizes and specifications subject to change without notice. Actual usable floor space may vary from the stated floor area. Furniture is displayed for illustration purposes only and does not necessarily reflect the electrical plan for the suite. Suites are sold unfurnished. Balcony, terrace and façade variations may apply, contact a sales representative for further details. Illustrations are artist's concept only. Prices and specifications subject to change without notice. E.&O.E. October 2020.



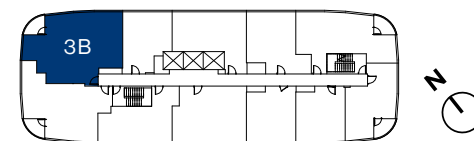
# W 3B

1,118 SQ.FT.

3 BEDROOMS 2 BATHROOMS

NORTH FACING

FLOORS 14-20



©Tridel 2020. \*Tridel, "D" design, Tridel Built for Life and Tridel Built for Life Design are registered Trademarks of Tridel Corporation. Project names and logos are Trademarks of their respective owners. All rights reserved. Buildings and views not to scale. All dimensions are approximate and subject to normal construction variances. Dimensions may exceed the usable floor area. Sizes and specifications subject to change without notice. Actual usable floor space may vary from the stated floor area. Furniture is displayed for illustration purposes only and does not necessarily reflect the electrical plan for the suite. Suites are sold unfurnished. Balcony, terrace and façade variations may apply, contact a sales representative for further details. Illustrations are artist's concept only. Prices and specifications subject to change without notice. E.&O.E. October 2020.



## FEATURES & FINISHES



Contemporary materials evoke a sense of elegance in your home at Westerly. Chrome fixtures, granite or quartz countertops and laminate cabinetry create an environment of comfort and modern luxury.

In the kitchen, energy-efficient appliances provide a chic, seamless cooking experience. While in the bathroom, a frameless glass shower or soaker tub instill a feeling of peace and relaxation.

Smart technology keeps you connected to your home, with digital entry, smartphone access to common areas, electronic parcel lockers, and wall pads in every suite that control heating and cooling systems, while keeping you connected with the concierge.

# THE LOBBY™

## DESIGN STUDIO

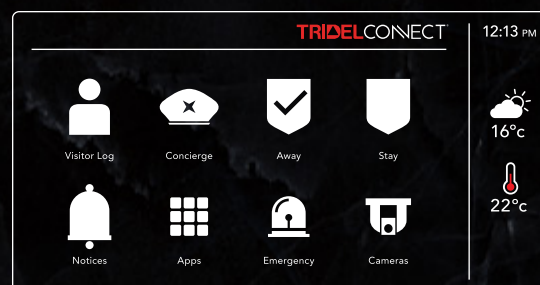
Step into The Lobby. Tridel's new Design Studio. Conceived exclusively for you to envision and personalize the home of your dreams. Experience each feature and finish in person, expertly selected by our award-winning design team. Our talented design consultants help guide the choices that will make your home distinctly yours. Exactly as you always imagined it.





# TRIDELCONNECT®

Innovative Smart Home Technology.



Tidel Connect® makes everyday living simpler. From convenient features such as hands-free entry, automated parcel delivery and smartphone access to your home, we're bringing it all together for a better living experience. Creating homes built for the innovations of today and prepared for those of tomorrow.



## CONTROL YOUR HOME, FROM ANYWHERE.

See who's at your door, adjust the temperature in your home, call the front desk, set the alarm, check the weather, and get building updates – all from your in-suite wall pad or the smartphone app. It's that easy.

## ENTERING YOUR SUITE.

Your home's digital door lock is unlocked with a distinct access code. Create up to four personalized access codes for family members and loved ones to come and go freely.



## LICENCE PLATE ID.

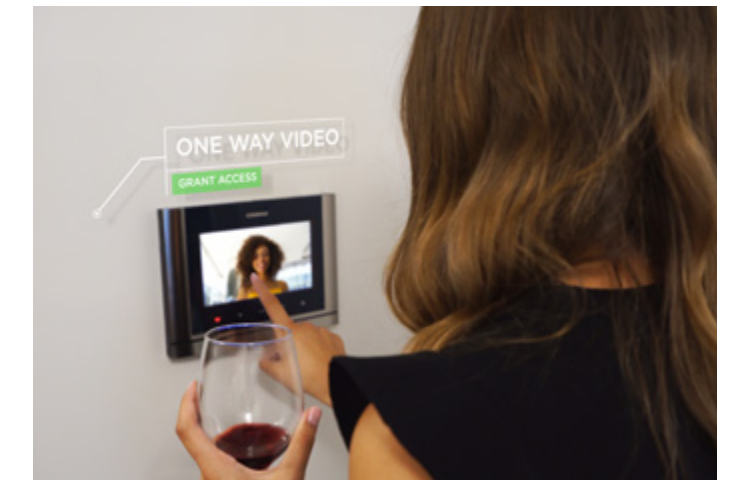
Arrive home by car like a VIP. With licence plate recognition, there's no need to fumble for your fob or reach your hand outside – your vehicle is recognized and you're granted entry to the building automatically.

## MOVE THROUGH THE BUILDING WITH EASE.

As a resident, your smartphone will be your access pass to the building, allowing you to unlock the doors to the private common areas and amenity spaces as you approach.

## LIGHTNING-FAST INTERNET.

Stay connected with unlimited, ultra high-speed internet in your suite, and in the lobby and common areas. This amenity is conveniently bundled along with your utilities in your maintenance fees.



## LETTING GUESTS IN.

Expecting company? Let Tidel Connect® show you who is calling with live, one-way video from the lobby or parking garage. Answer their call and grant your guest access with a tap on your wall pad or your phone.

## PEACE OF MIND AT HOME.

Arm the alarm from your wall pad or smartphone, or select the "stay" function, allowing you to set the alarm while remaining at home. If activated, both you and the front desk will be notified.



## PARCEL DELIVERY LOCKERS.

Enjoy 24/7 direct access to your parcels, moments after they are delivered, with a private and sophisticated parcel delivery locker system. You'll receive a digital notification that your package is ready and waiting to be picked up.