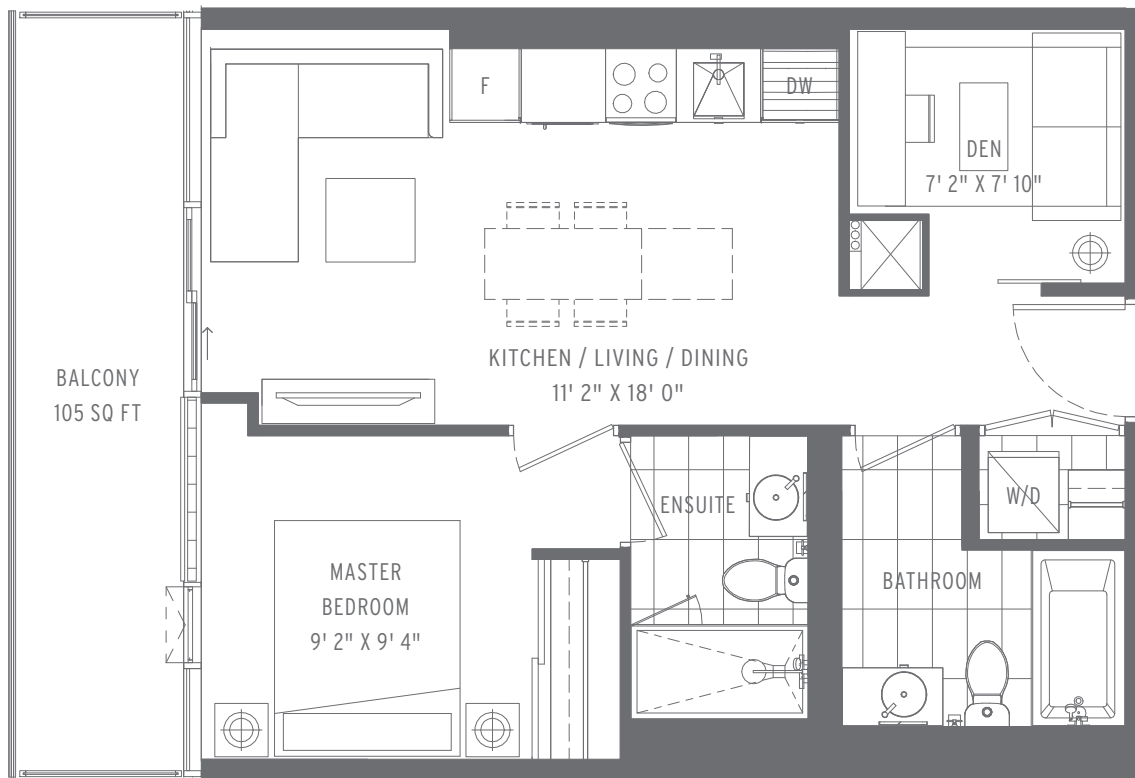
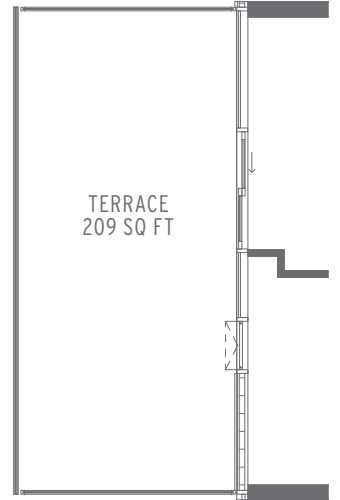
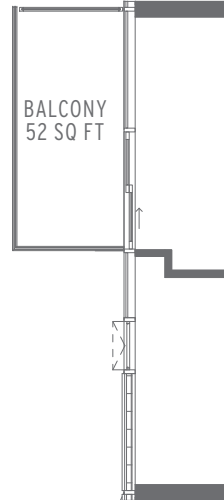
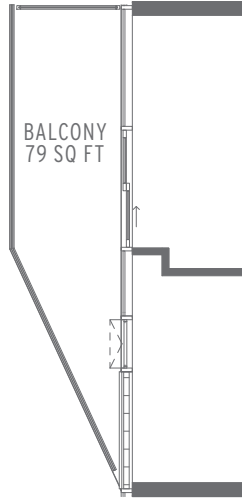
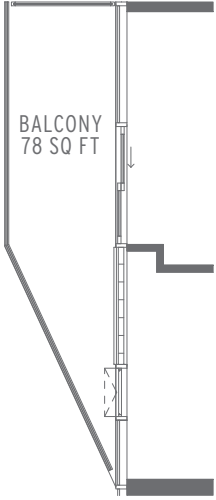


INTERIOR SQ FT: 577

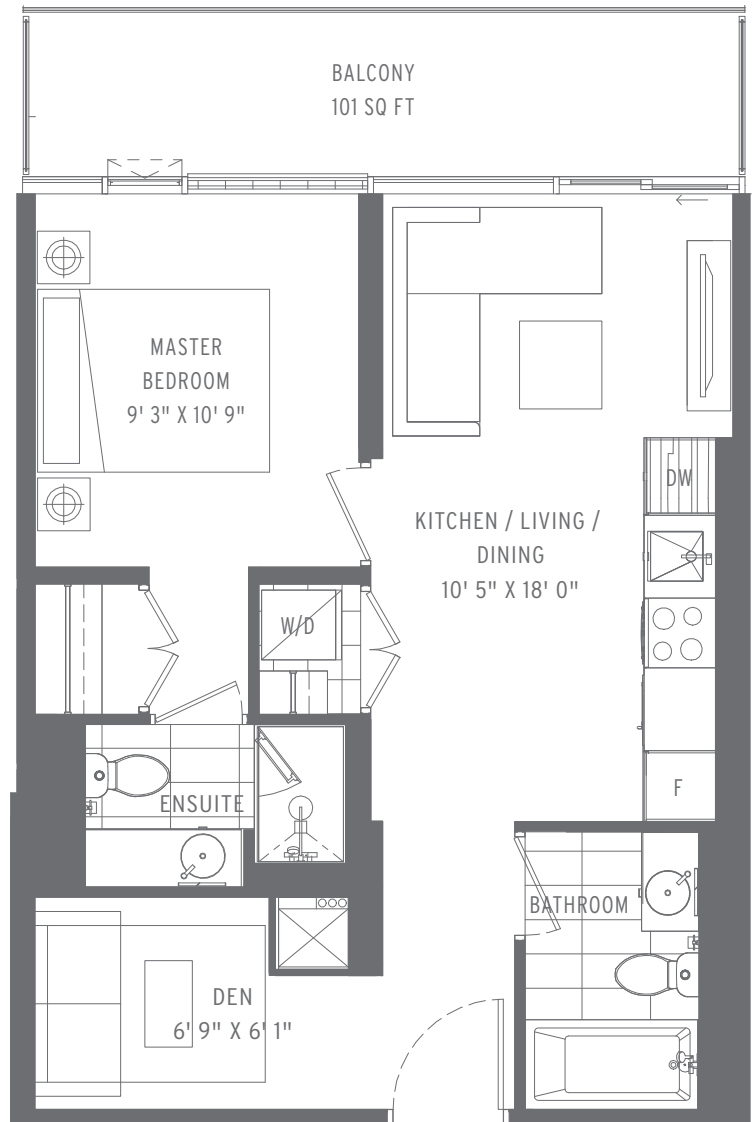
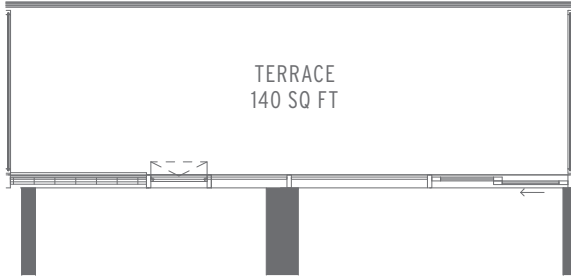
EXTERIOR SQ FT: 105

TOTAL SQ FT: 682



**Sample Plan**

This plan is not to scale and is subject to architectural review and revision, including without limitation, the Unit being constructed with a layout that is the reverse of that set out above. All drawings, floorplans, renderings, materials, finishes, tile patterns, specifications, details and dimensions, if any, are approximate and subject to change without notice. Actual floor area may vary from that stated hereon. Furniture and island not included. Bulkheads are not shown on this plan and will be located in areas of the Unit. Certain units may have 'bird-friendly' windows or balcony rail. Balconies, terraces and patios, if any, are exclusive use common elements or common elements as per plan, may vary depending on floor level, location and other factors, are shown for display purposes only and location and size are subject to change without notice. Window, spandrel panel, door, patio, terrace and balcony locations, size and type may vary without notice. E.60. E. October 13, 2020



**Sample Plan**

This plan is not to scale and is subject to architectural review and revision, including without limitation, the Unit being constructed with a layout that is the reverse of that set out above. All drawings, floorplans, renderings, materials, finishes, tile patterns, specifications, details and dimensions, if any, are approximate and subject to change without notice. Actual floor area may vary from that stated hereon. Furniture and island not included. Bulkheads are not shown on this plan and will be located in areas of the Unit. Certain units may have 'bird-friendly' windows or balcony rail. Balconies, terraces and patios, if any, are exclusive use common elements or common elements as per plan, may vary depending on floor level, location and other factors, are shown for display purposes only and location and size are subject to change without notice. Window, spandrel panel, door, patio, terrace and balcony locations, size and type may vary without notice. E.60. E. October 13, 2020



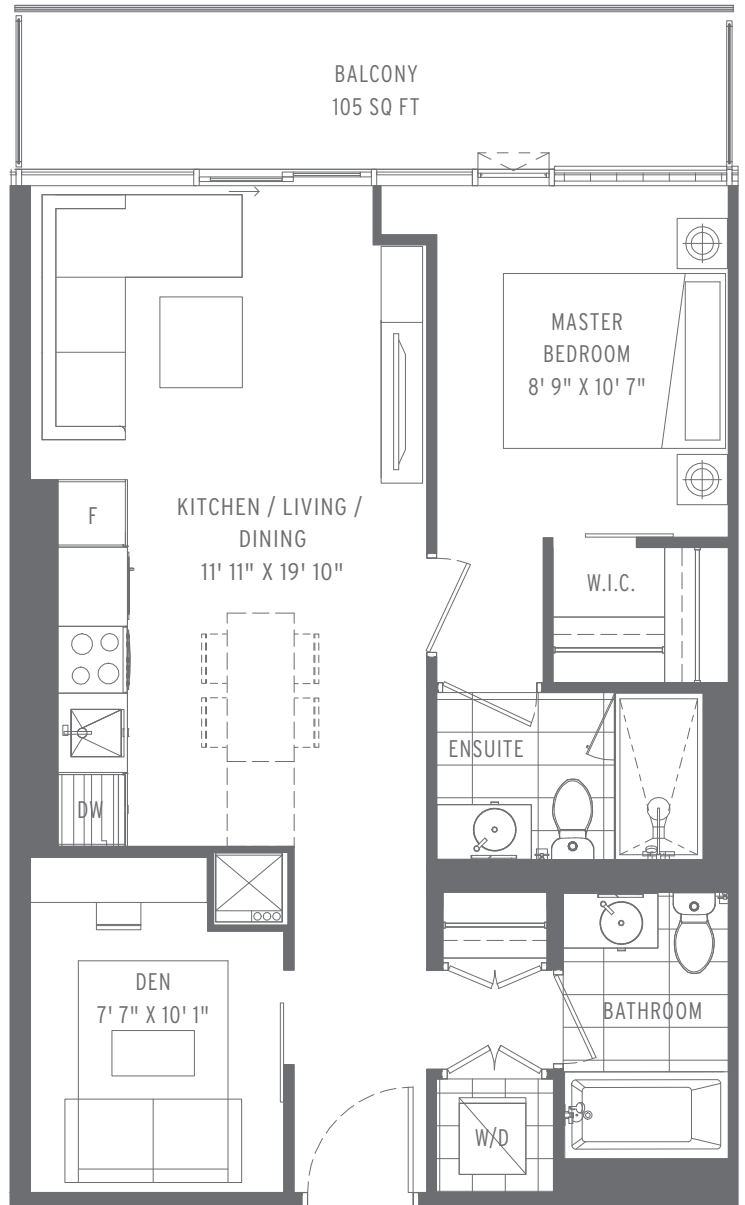
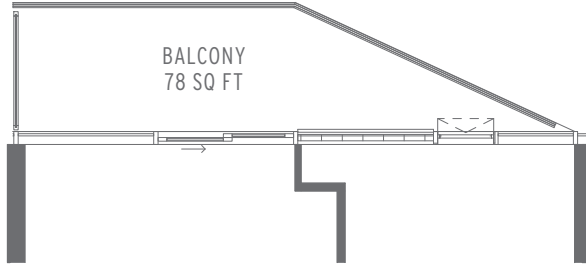
### Sample Plan

This plan is not to scale and is subject to architectural review and revision, including without limitation, the Unit being constructed with a layout that is the reverse of that set out above. All drawings, floorplans, renderings, materials, finishes, tile patterns, specifications, details and dimensions, if any, are approximate and subject to change without notice. Actual floor area may vary from that stated hereon. Furniture and island not included. Bulkheads are not shown on this plan and will be located in areas of the Unit. Certain units may have 'bird-friendly' windows or balcony rail. Balconies, terraces and patios, if any, are exclusive use common elements or common elements as per plan, may vary depending on floor level, location and other factors, are shown for display purposes only and location and size are subject to change without notice. Window, spandrel panel, door, patio, terrace and balcony locations, size and type may vary without notice. E.60. E. October 13, 2020

INTERIOR SQ FT: 671

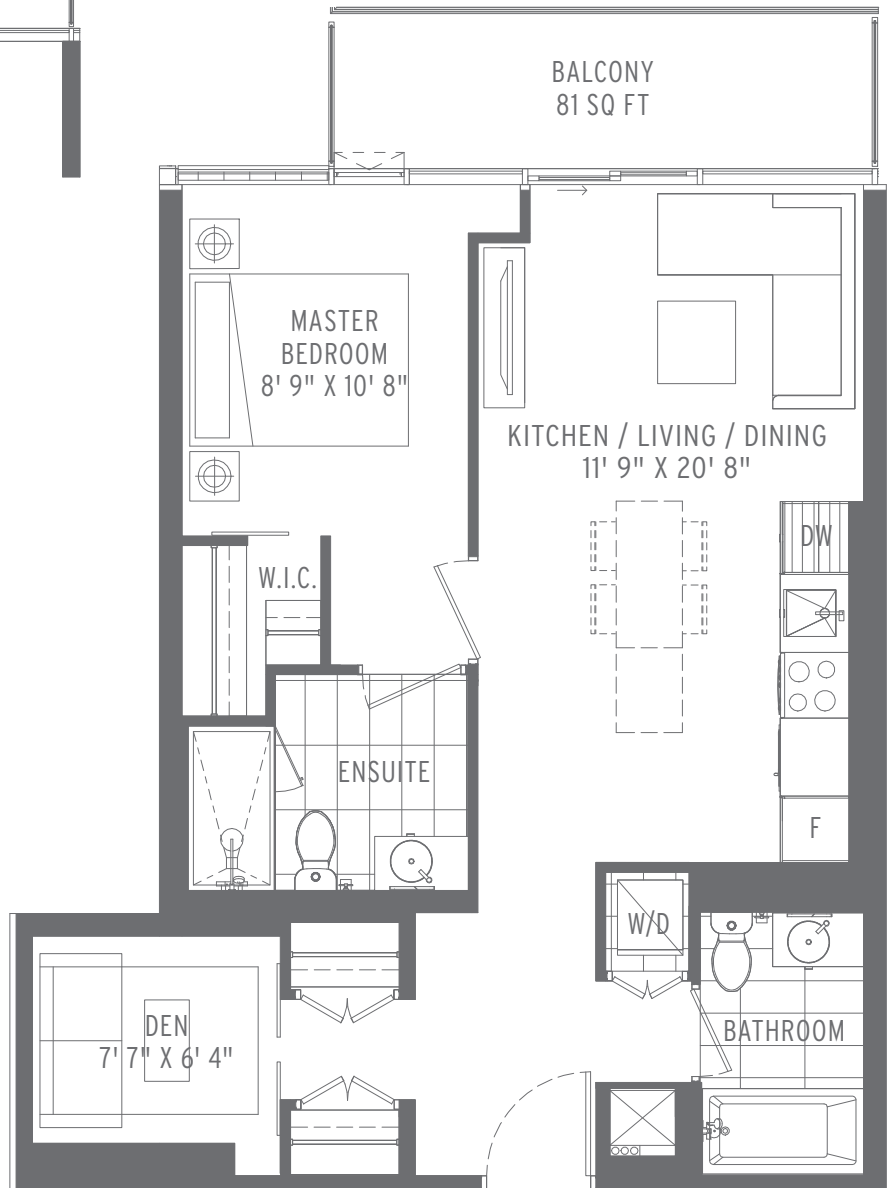
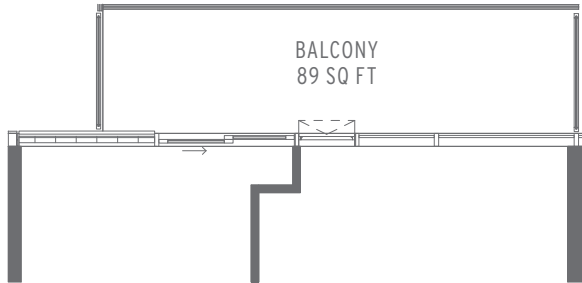
EXTERIOR SQ FT: 105

TOTAL SQ FT: 776



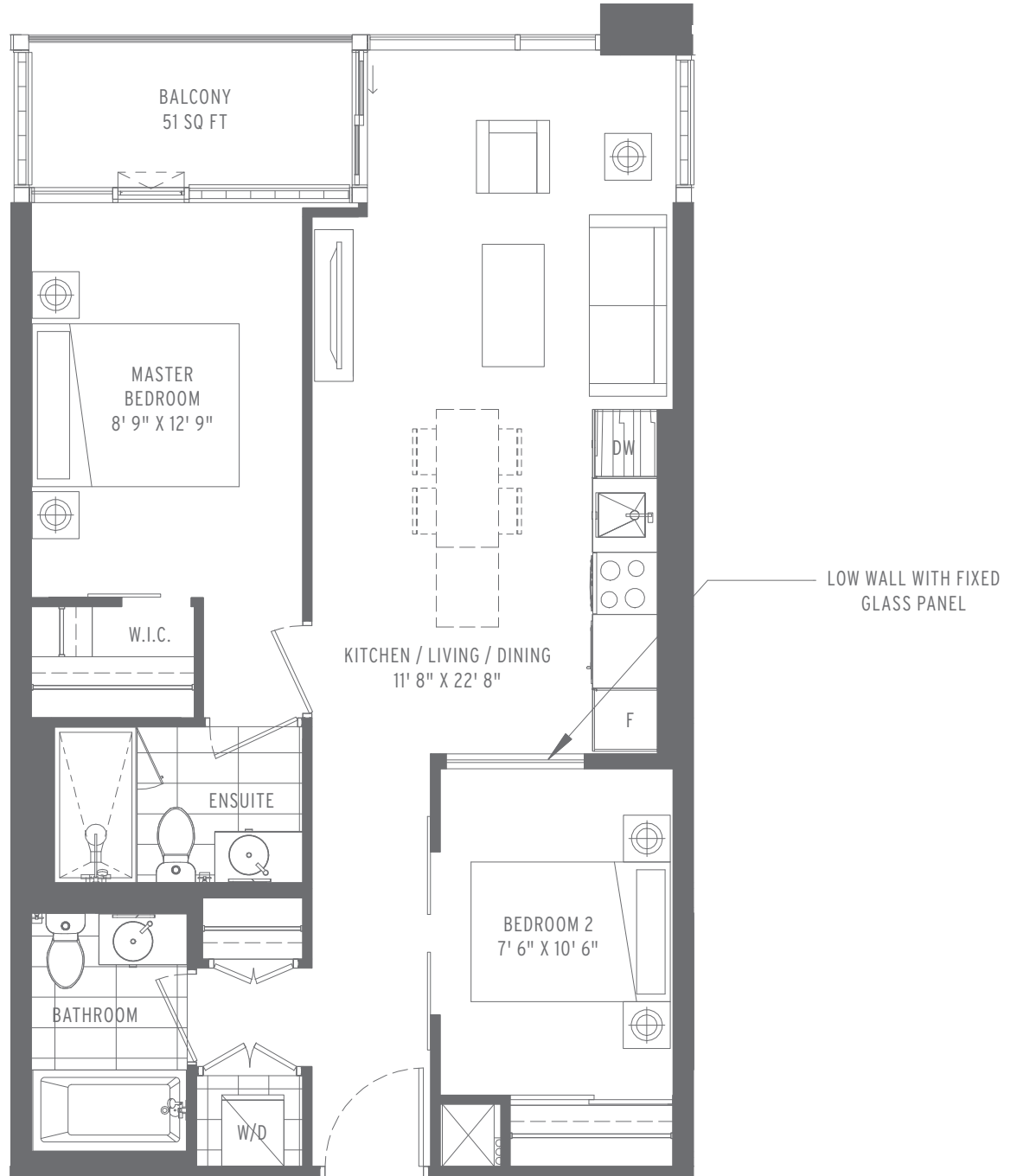
**Sample Plan**

This plan is not to scale and is subject to architectural review and revision, including without limitation, the Unit being constructed with a layout that is the reverse of that set out above. All drawings, floorplans, renderings, materials, finishes, tile patterns, specifications, details and dimensions, if any, are approximate and subject to change without notice. Actual floor area may vary from that stated hereon. Furniture and island not included. Bulkheads are not shown on this plan and will be located in areas of the Unit. Certain units may have 'bird-friendly' windows or balcony rail. Balconies, terraces and patios, if any, are exclusive use common elements or common elements as per plan, may vary depending on floor level, location and other factors, are shown for display purposes only and location and size are subject to change without notice. Window, spandrel panel, door, patio, terrace and balcony locations, size and type may vary without notice. E.60. E. October 13, 2020



**Sample Plan**

This plan is not to scale and is subject to architectural review and revision, including without limitation, the Unit being constructed with a layout that is the reverse of that set out above. All drawings, floorplans, renderings, materials, finishes, tile patterns, specifications, details and dimensions, if any, are approximate and subject to change without notice. Actual floor area may vary from that stated herein. Furniture and island not included. Bulkheads are not shown on this plan and will be located in areas of the Unit. Certain units may have 'bird-friendly' windows or balcony rail. Balconies, terraces and patios, if any, are exclusive use common elements or common elements as per plan, may vary depending on floor level, location and other factors, are shown for display purposes only and location and size are subject to change without notice. Window, spandrel panel, door, patio, terrace and balcony locations, size and type may vary without notice. E.&O. E. October 13, 2020



### Sample Plan

This plan is not to scale and is subject to architectural review and revision, including without limitation, the Unit being constructed with a layout that is the reverse of that set out above. All drawings, floorplans, renderings, materials, finishes, tile patterns, specifications, details and dimensions, if any, are approximate and subject to change without notice. Actual floor area may vary from that stated hereon. Furniture and island not included. Bulkheads are not shown on this plan and will be located in areas of the Unit. Certain units may have 'bird-friendly' windows or balcony rail. Balconies, terraces and patios, if any, are exclusive use common elements or common elements as per plan, may vary depending on floor level, location and other factors, are shown for display purposes only and location and size are subject to change without notice. Window, spandrel panel, door, patio, terrace and balcony locations, size and type may vary without notice. E.&O. E. October 13, 2020

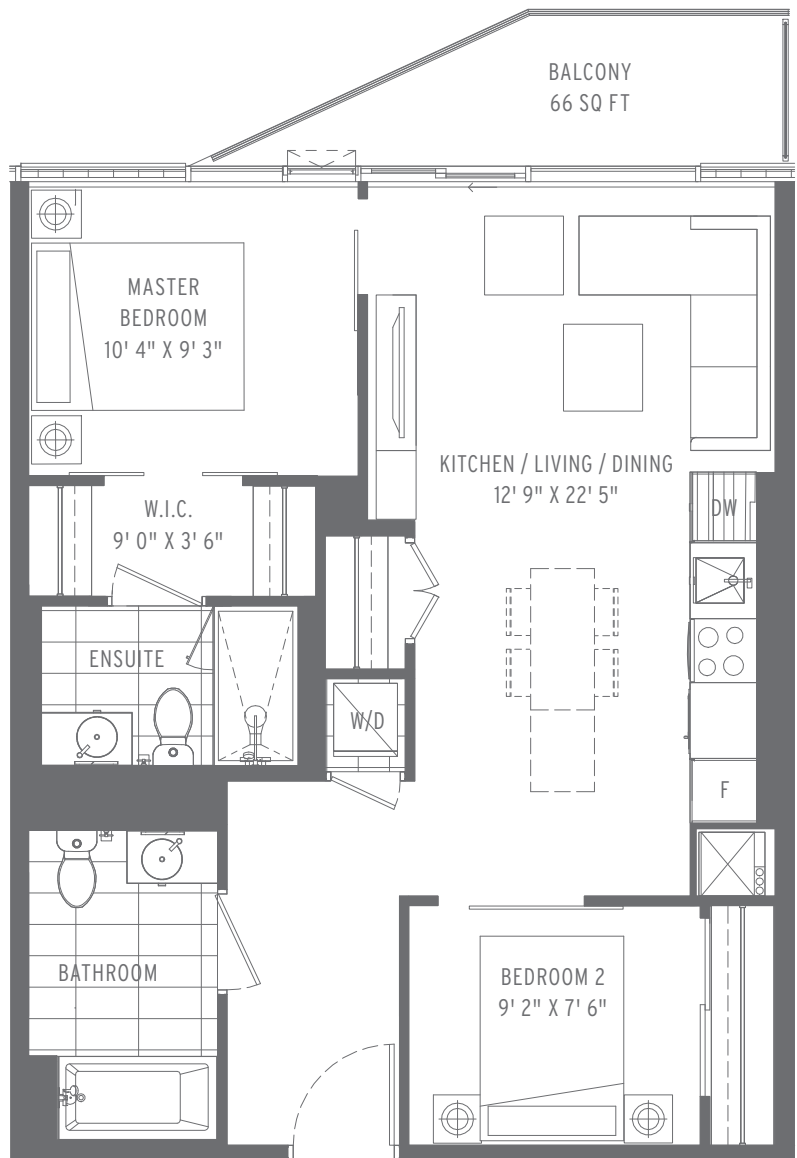
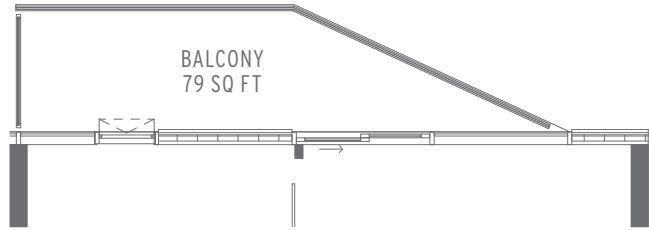
# PERCH

## OAK 2 BED, 2 BATH

INTERIOR SQ FT: 749

EXTERIOR SQ FT: 66

TOTAL SQ FT: 815



### Sample Plan

This plan is not to scale and is subject to architectural review and revision, including without limitation, the Unit being constructed with a layout that is the reverse of that set out above. All drawings, floorplans, renderings, materials, finishes, tile patterns, specifications, details and dimensions, if any, are approximate and subject to change without notice. Actual floor area may vary from that stated hereon. Furniture and island not included. Bulkheads are not shown on this plan and will be located in areas of the Unit. Certain units may have 'bird-friendly' windows or balcony rail. Balconies, terraces and patios, if any, are exclusive use common elements or common elements as per plan, may vary depending on floor level, location and other factors, are shown for display purposes only and location and size are subject to change without notice. Window, spandrel panel, door, patio, terrace and balcony locations, size and type may vary without notice. E.&O. E. October 13, 2020

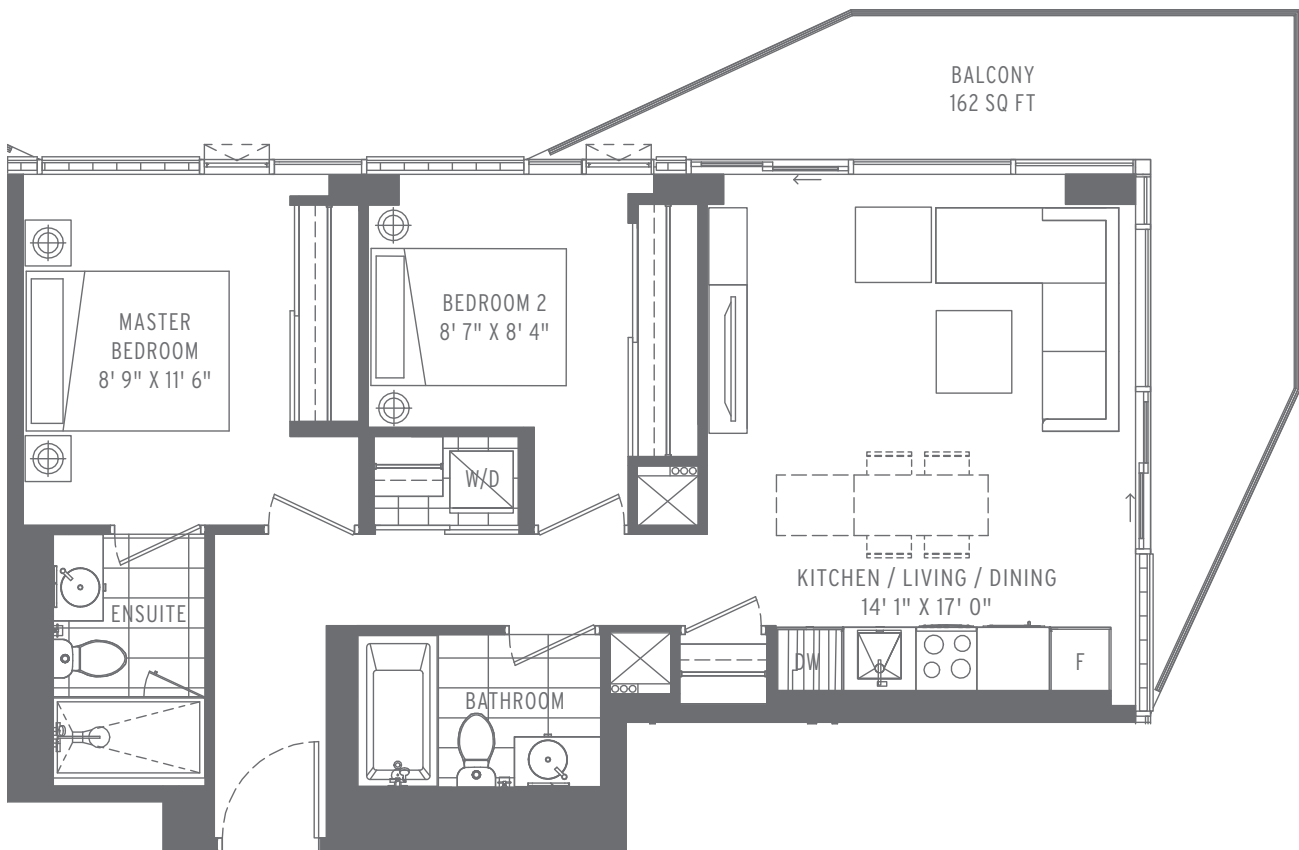
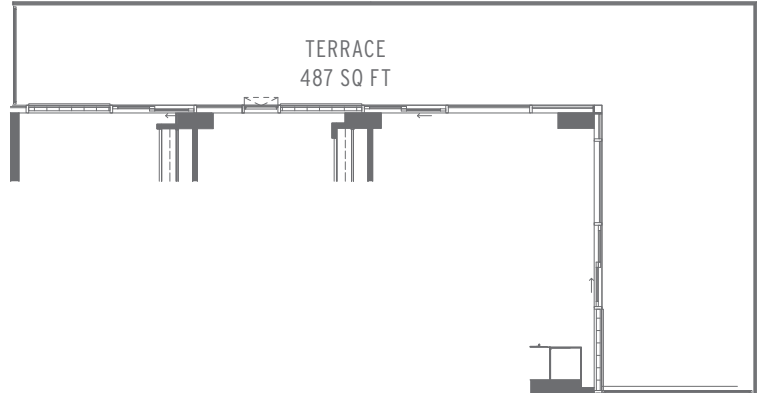
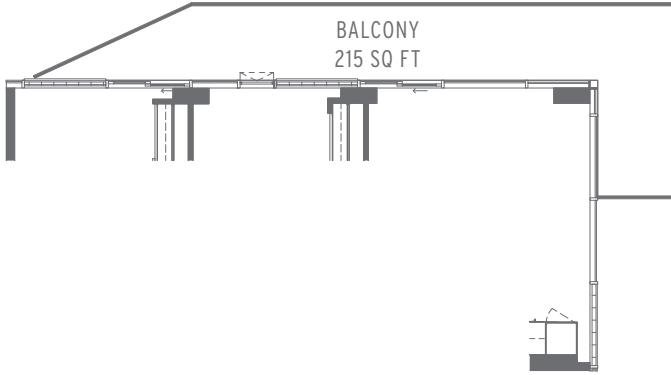
# PERCH

## POPLAR 2 BED, 2 BATH

INTERIOR SQ FT: 759

EXTERIOR SQ FT: 162

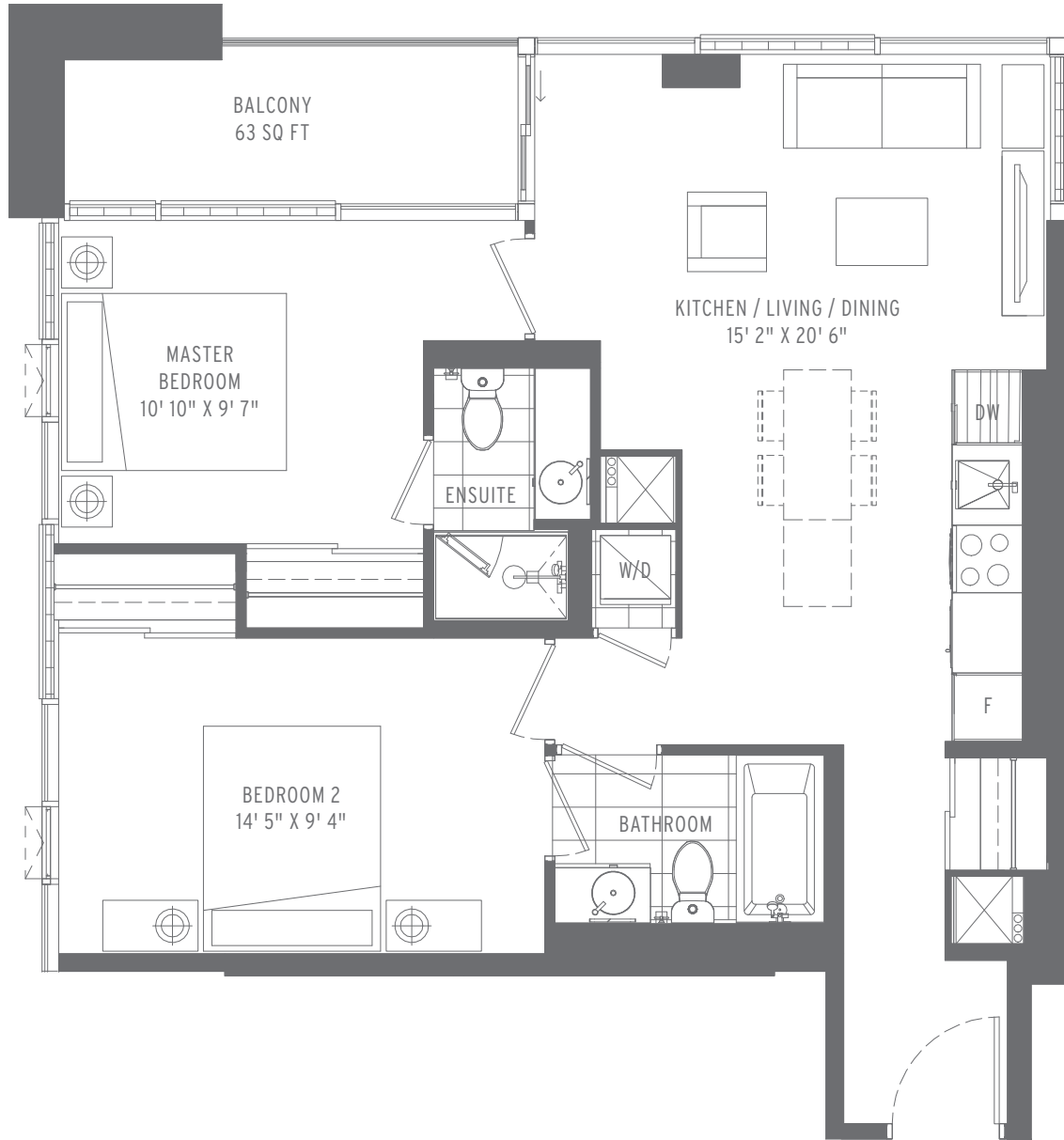
TOTAL SQ FT: 921



### Sample Plan

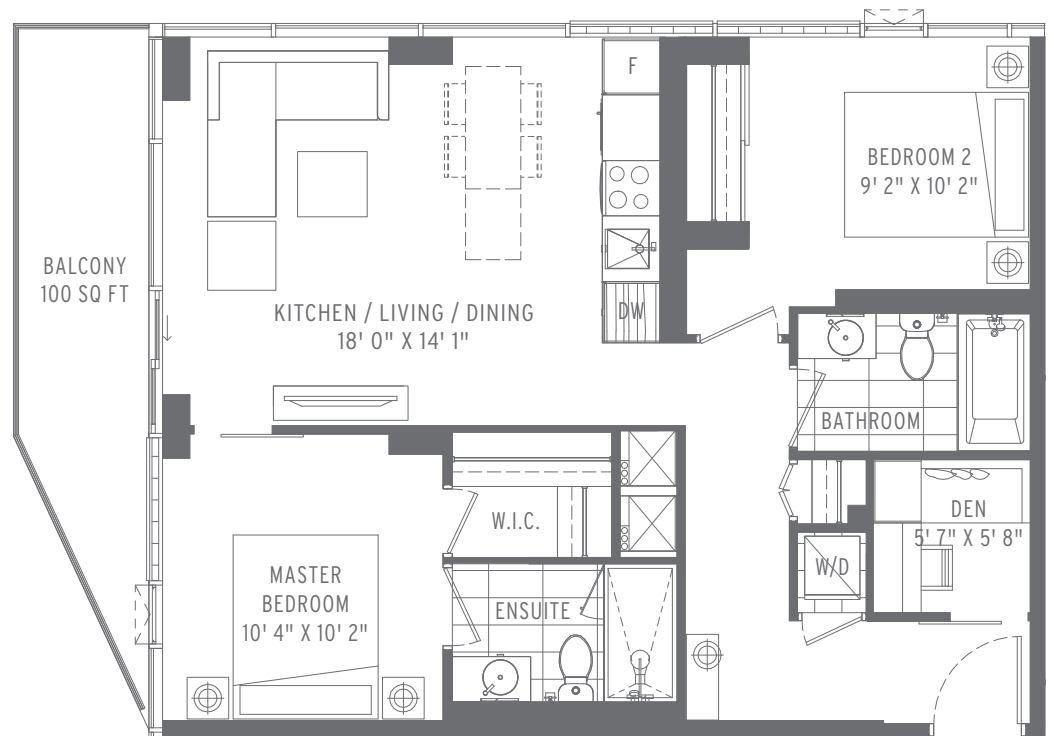
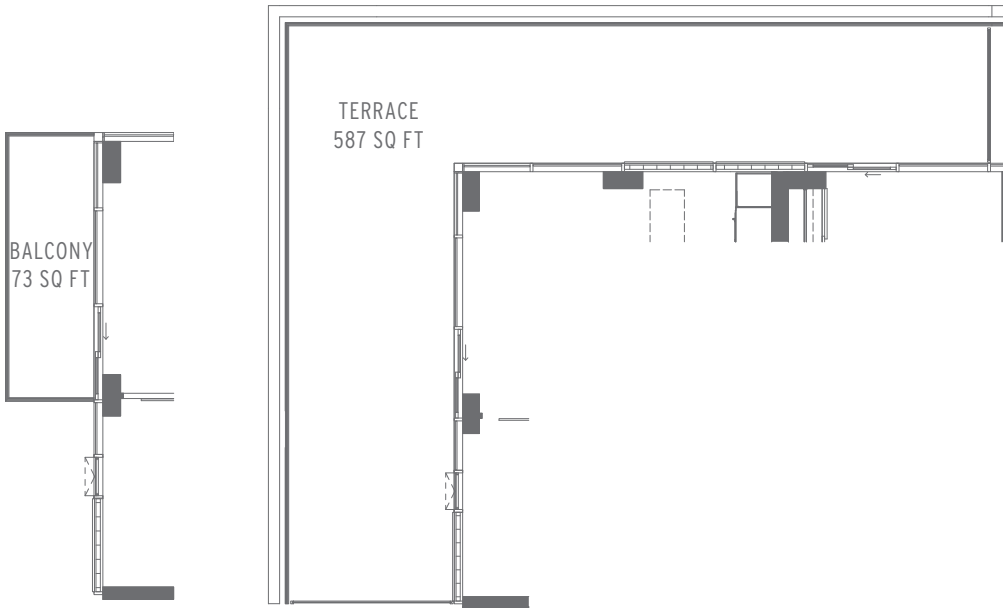
This plan is not to scale and is subject to architectural review and revision, including without limitation, the Unit being constructed with a layout that is the reverse of that set out above. All drawings, floorplans, renderings, materials, finishes, tile patterns, specifications, details and dimensions, if any, are approximate and subject to change without notice. Actual floor area may vary from that stated hereon. Furniture and island not included. Bulkheads are not shown on this plan and will be located in areas of the Unit. Certain units may have 'bird-friendly' windows or balcony rail. Balconies, terraces and patios, if any, are exclusive use common elements or common elements as per plan, may vary depending on floor level, location and other factors, are shown for display purposes only and location and size are subject to change without notice. Window, spandrel panel, door, patio, terrace and balcony locations, size and type may vary without notice. E.60. E. October 13, 2020





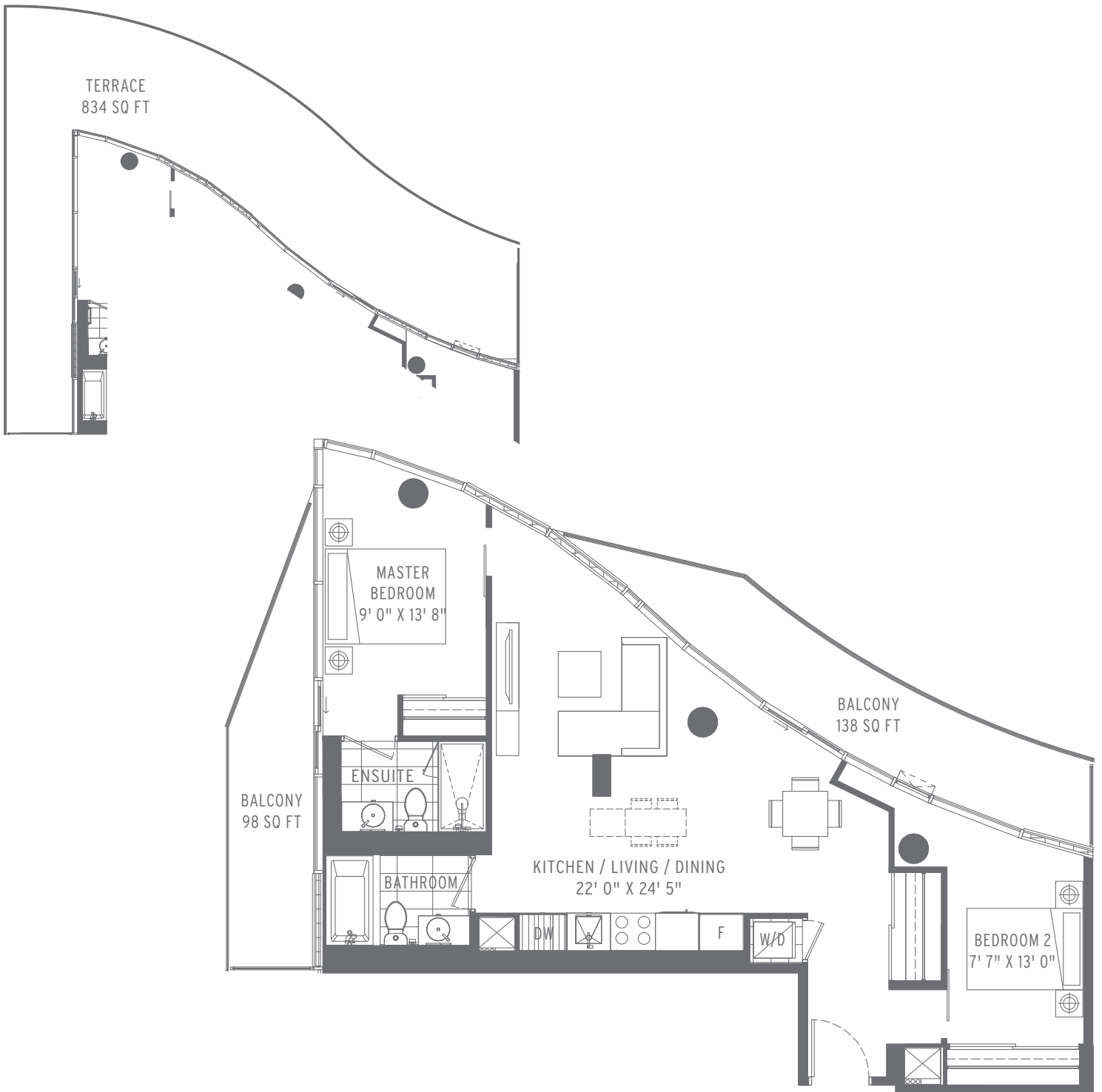
### Sample Plan

This plan is not to scale and is subject to architectural review and revision, including without limitation, the Unit being constructed with a layout that is the reverse of that set out above. All drawings, floorplans, renderings, materials, finishes, tile patterns, specifications, details and dimensions, if any, are approximate and subject to change without notice. Actual floor area may vary from that stated herein. Furniture and island not included. Bulkheads are not shown on this plan and will be located in areas of the Unit. Certain units may have 'bird-friendly' windows or balcony rail. Balconies, terraces and patios, if any, are exclusive use common elements or common elements as per plan, may vary depending on floor level, location and other factors, are shown for display purposes only and location and size are subject to change without notice. Window, spandrel panel, door, patio, terrace and balcony locations, size and type may vary without notice. E.&O. E. October 13, 2020



**Sample Plan**

This plan is not to scale and is subject to architectural review and revision, including without limitation, the Unit being constructed with a layout that is the reverse of that set out above. All drawings, floorplans, renderings, materials, finishes, tile patterns, specifications, details and dimensions, if any, are approximate and subject to change without notice. Actual floor area may vary from that stated hereon. Furniture and island not included. Bulkheads are not shown on this plan and will be located in areas of the Unit. Certain units may have 'bird-friendly' windows or balcony rail. Balconies, terraces and patios, if any, are exclusive use common elements or common elements as per plan, may vary depending on floor level, location and other factors, are shown for display purposes only and location and size are subject to change without notice. Window, spandrel panel, door, patio, terrace and balcony locations, size and type may vary without notice. E.60. E. October 13, 2020



### Sample Plan

This plan is not to scale and is subject to architectural review and revision, including without limitation, the Unit being constructed with a layout that is the reverse of that set out above. All drawings, floorplans, renderings, materials, finishes, tile patterns, specifications, details and dimensions, if any, are approximate and subject to change without notice. Actual floor area may vary from that stated herein. Furniture and island not included. Bulkheads are not shown on this plan and will be located in areas of the Unit. Certain units may have 'bird-friendly' windows or balcony rail. Balconies, terraces and patios, if any, are exclusive use common elements or common elements as per plan, may vary depending on floor level, location and other factors, are shown for display purposes only and location and size are subject to change without notice. Window, spandrel panel, door, patio, terrace and balcony locations, size and type may vary without notice. E.60. E. October 13, 2020



### Sample Plan

This plan is not to scale and is subject to architectural review and revision, including without limitation, the Unit being constructed with a layout that is the reverse of that set out above. All drawings, floorplans, renderings, materials, finishes, tile patterns, specifications, details and dimensions, if any, are approximate and subject to change without notice. Actual floor area may vary from that stated hereon. Furniture and island not included. Bulkheads are not shown on this plan and will be located in areas of the Unit. Certain units may have 'bird-friendly' windows or balcony rail. Balconies, terraces and patios, if any, are exclusive use common elements or common elements as per plan, may vary depending on floor level, location and other factors, are shown for display purposes only and location and size are subject to change without notice. Window, spandrel panel, door, patio, terrace and balcony locations, size and type may vary without notice. E.60. E. October 13, 2020