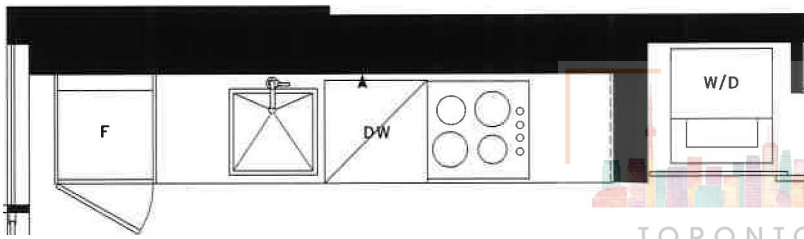


MERCER 03  
STUDIO: 370 SF

N°  
555  
MERCER

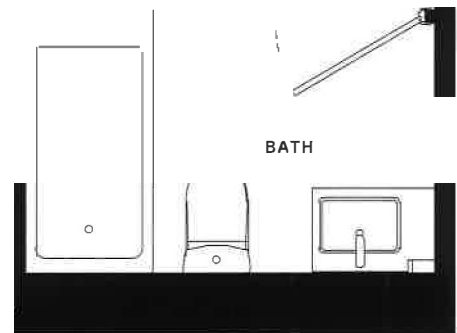
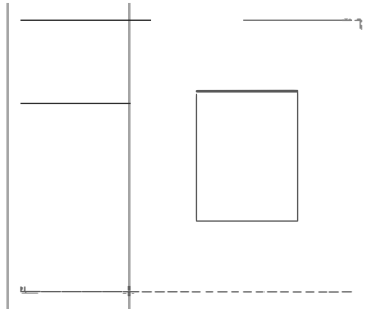
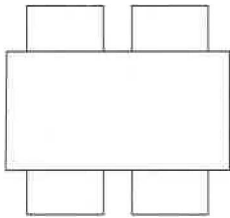


KITCHEN/DINING/LIVING  
17' 3" x 11' 10"

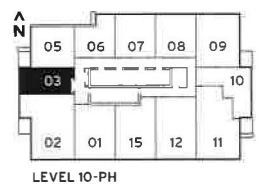
TORONTO  
CONDO4U.ca



JUL ETTE



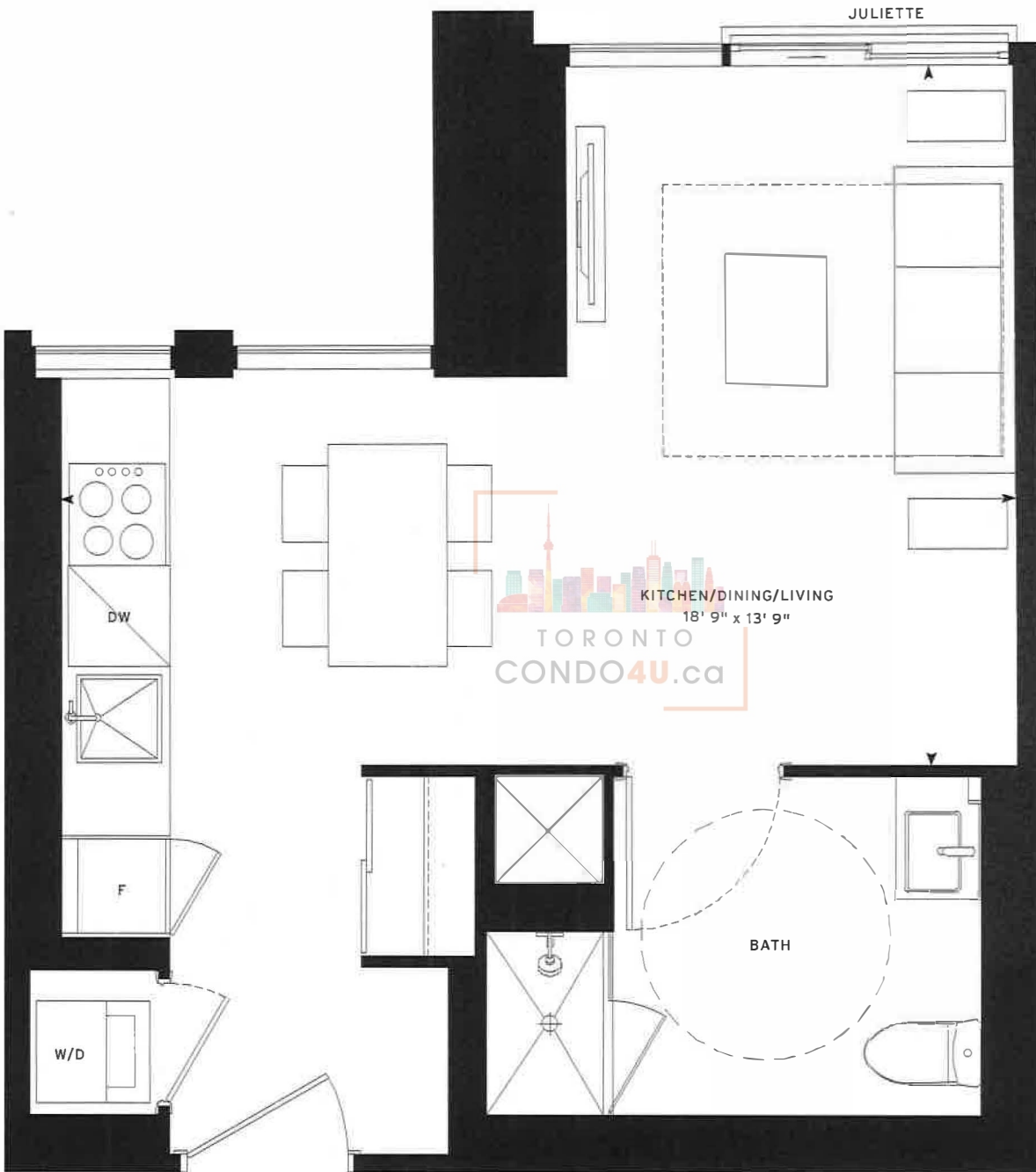
BATH



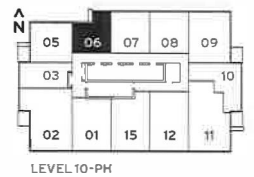
LEVEL 10-PH

MERCER 06  
STUDIO: 396 SF

Nº  
555  
MERCER

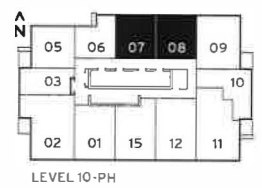
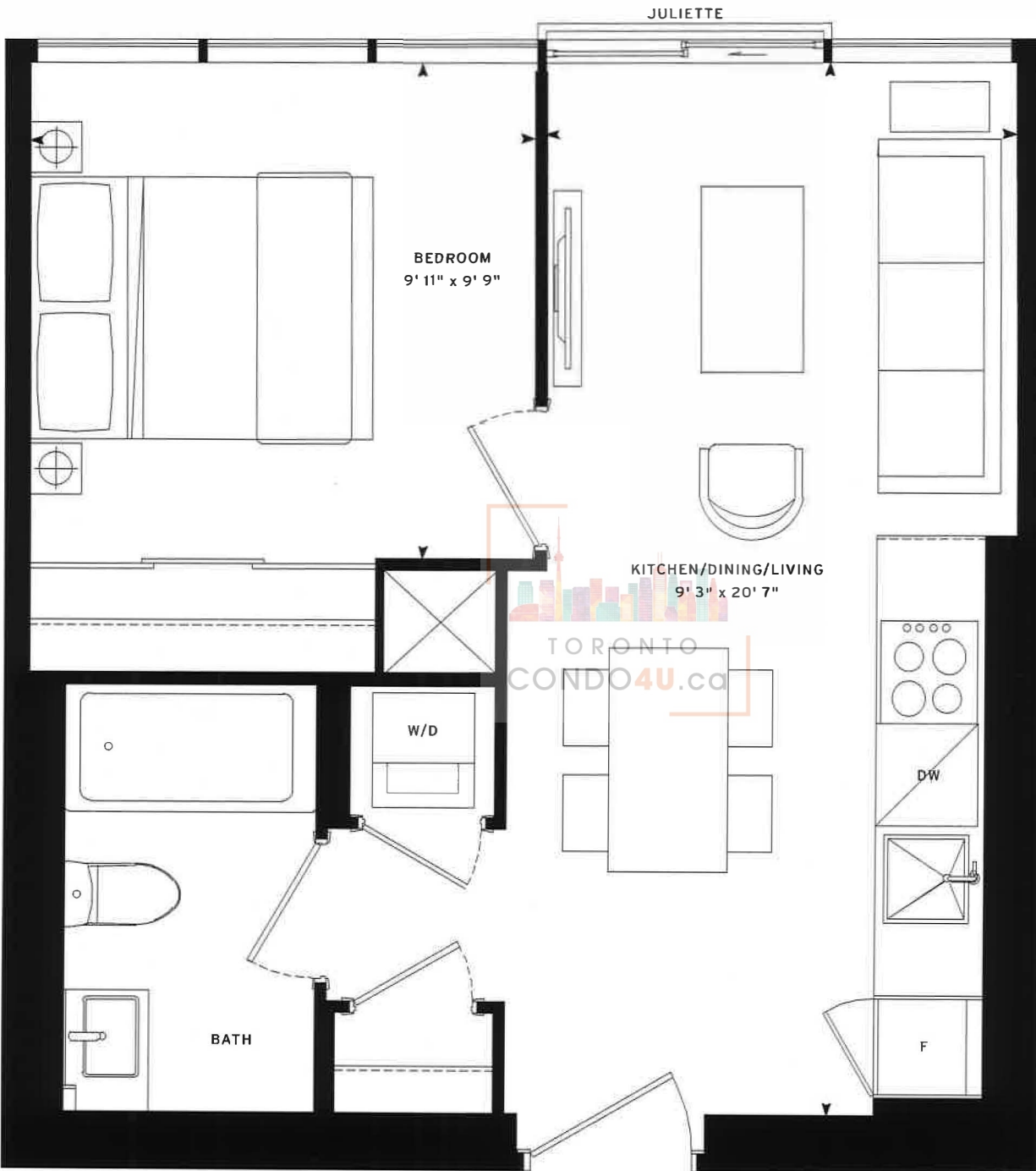


TORONTO  
CONDO4U.ca



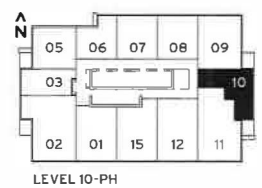
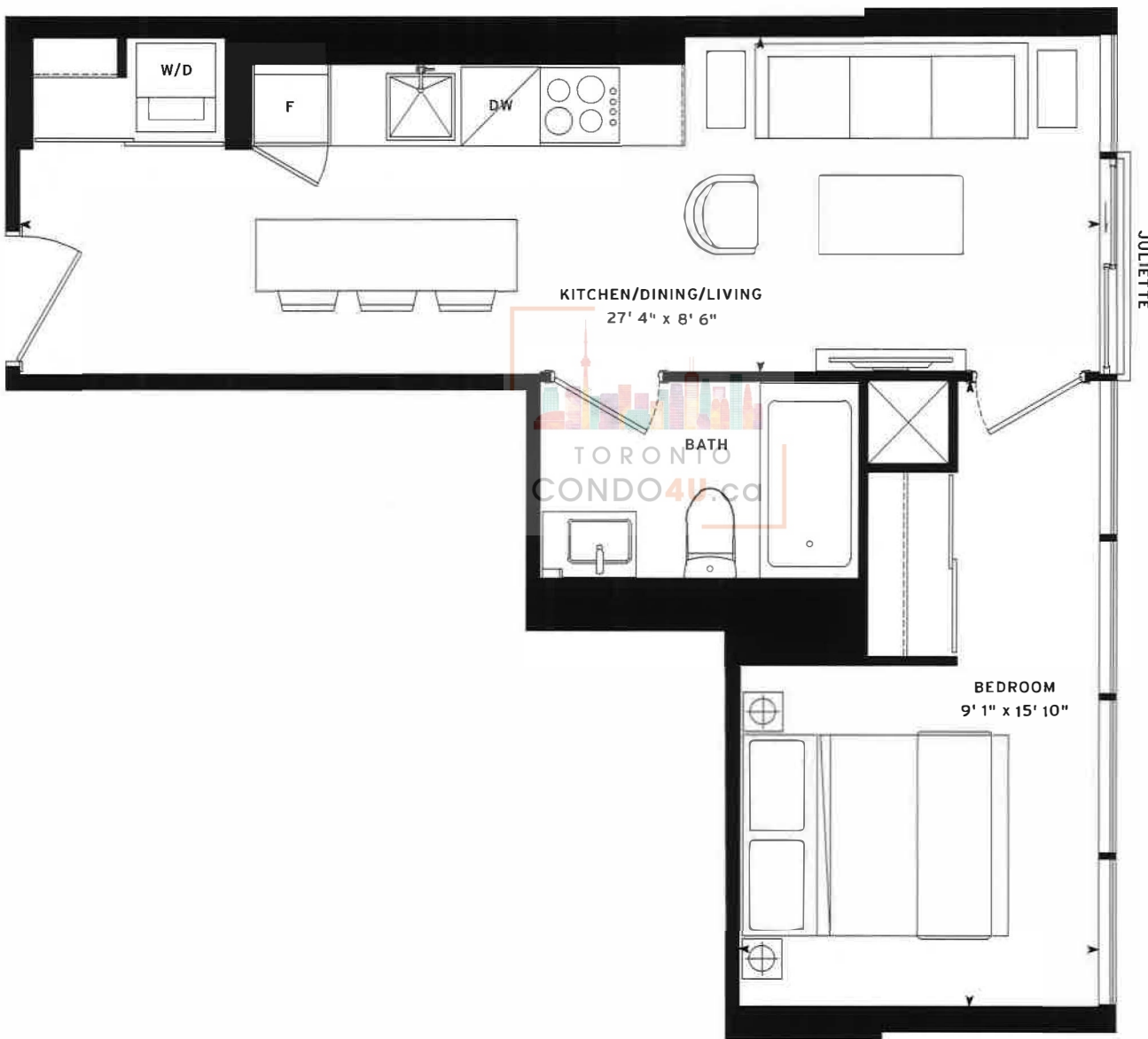
**MERCER 07/08**  
**1 BED: 459 SF**

**N<sup>o</sup>**  
**555**  
**MERCER**



**MERCER 10**  
**1 BED: 463 SF**

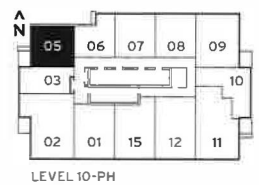
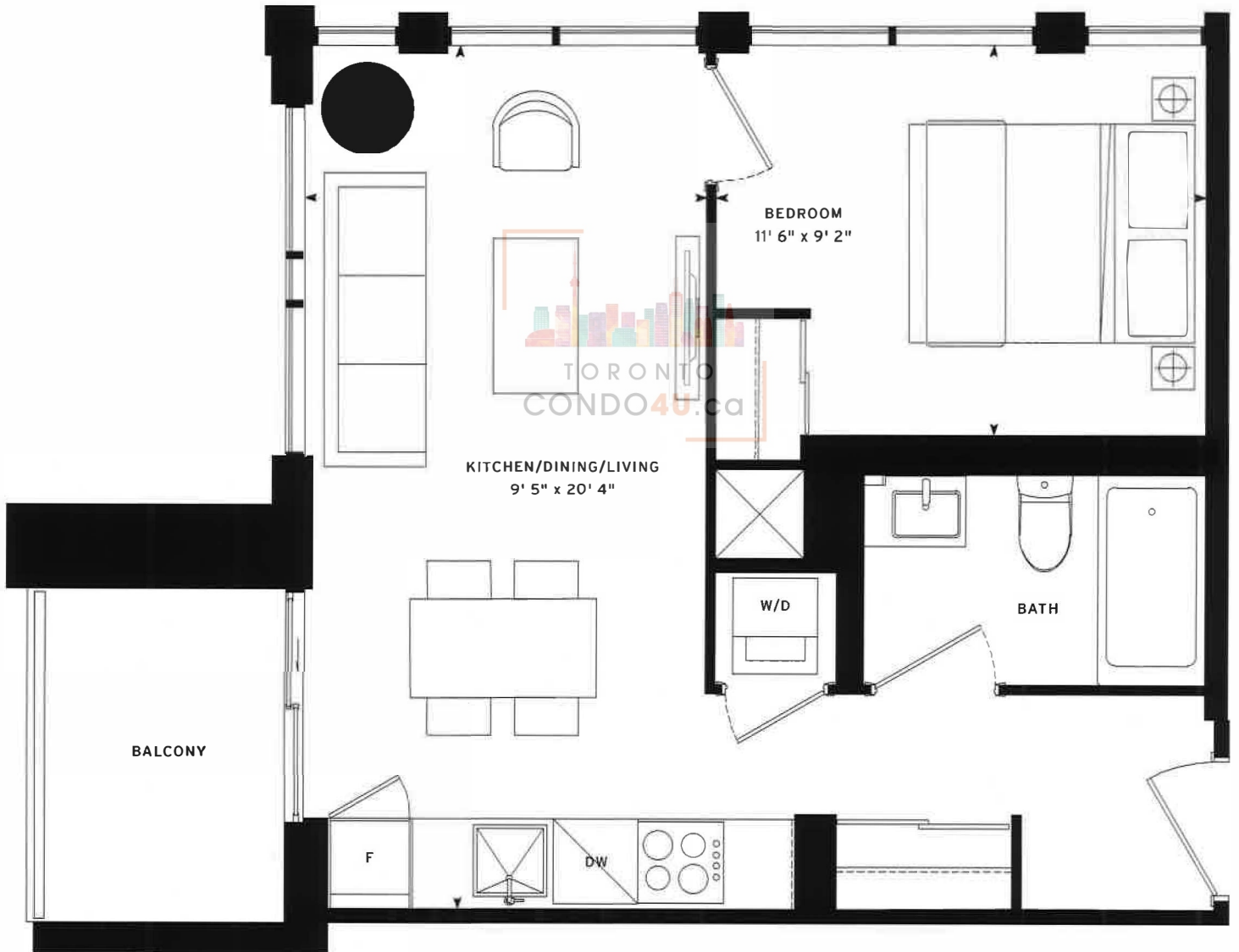
**N°**  
**555**  
**MERCER**



MERCER 05  
1 BED: 479 SF

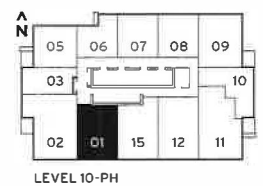
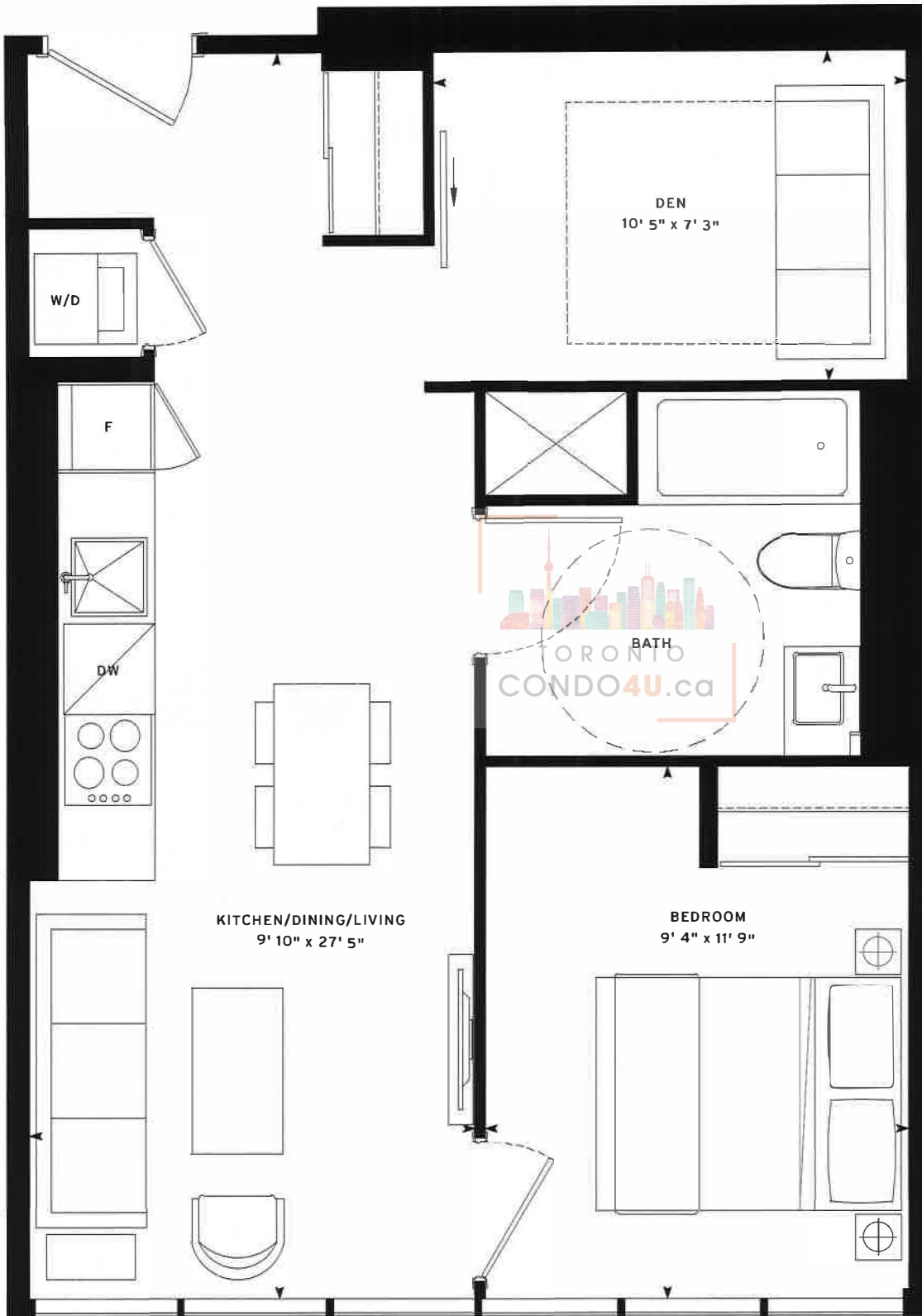
# N° 555

MERCER



**MERCER 01**  
**1 BED PLUS DEN: 594 SF**

**N° 555**  
**MERCER**



Note: All prices, figures, sizes, specifications and information are subject to change without notice. E. & O.E. All areas and stated dimensions are approximate. Actual usable floor space, living area and square footage may vary from stated floor area. All illustrations are artist's concept only. The unit shown may be the reverse of the unit purchased. Exterior building elements may be visible from within unit, including but not limited to frit patterning, mullion/metal panel placements, or other visual treatments. The purchase price does not include any furniture. © 2020 CentreCourt Developments. All rights reserved.



**MERCER 09**  
**1 BED PLUS DEN: 610 SF**

**N°**  
**555**  
**MERCER**

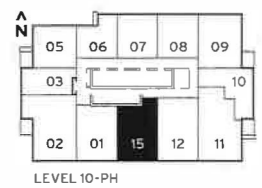
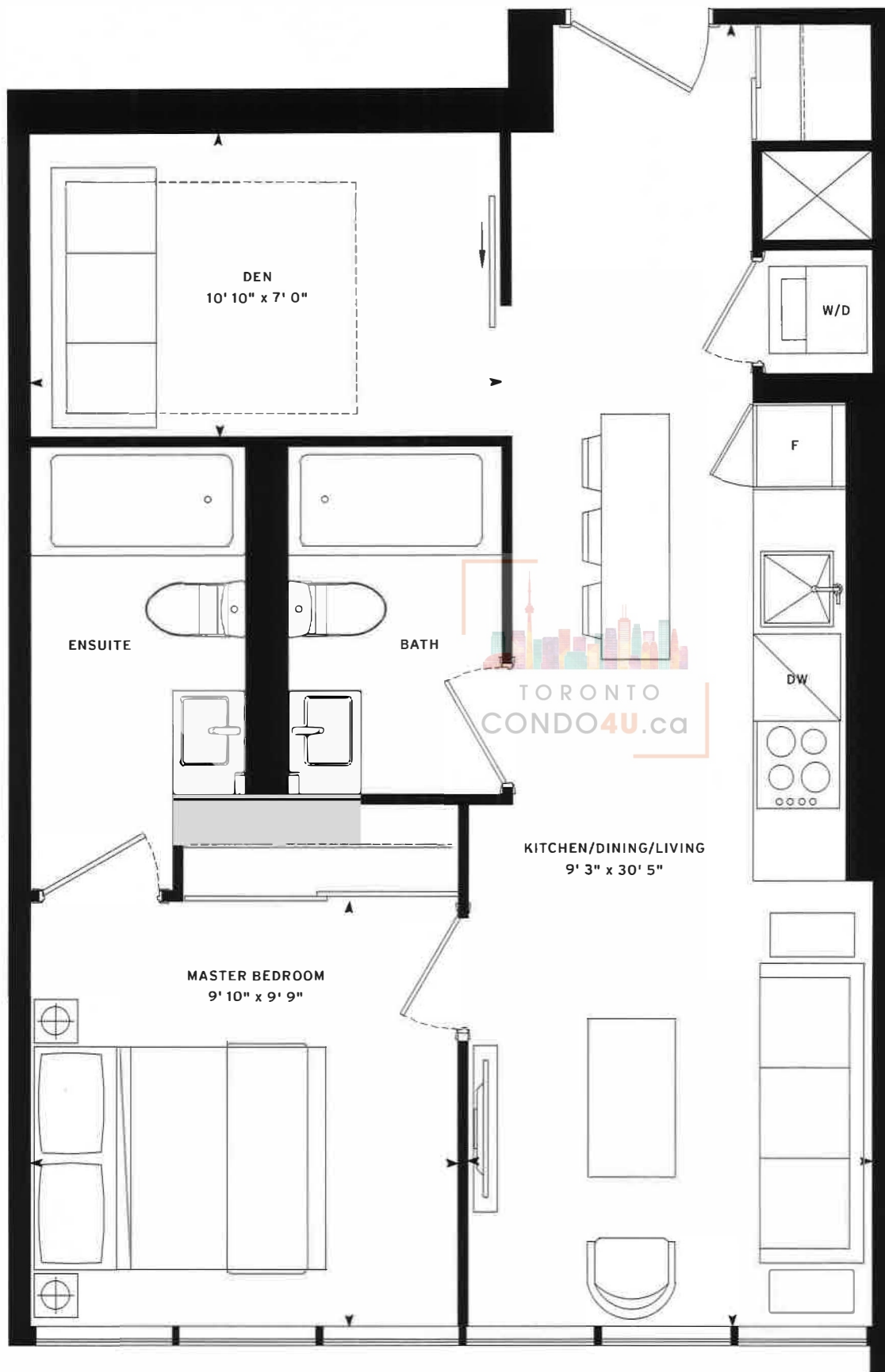


Note: All prices, figures, sizes, specifications and information are subject to change without notice. E & O E. All areas and stated dimensions are approximate. Actual usable floor space, living area and square footage may vary from stated floor area. All illustrations are artist's concept only. The unit shown may be the reverse of the unit purchased. Exterior building elements may be visible from within unit, including but not limited to frit patterning, mullion/metal panel placements, or other visual treatments. The purchase price does not include any furniture. © 2020 CentreCourt Developments. All rights reserved.



**MERCER 15**  
**1 BED PLUS DEN: 617 SF**

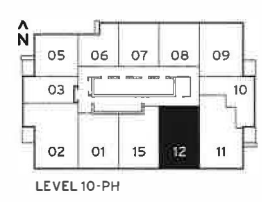
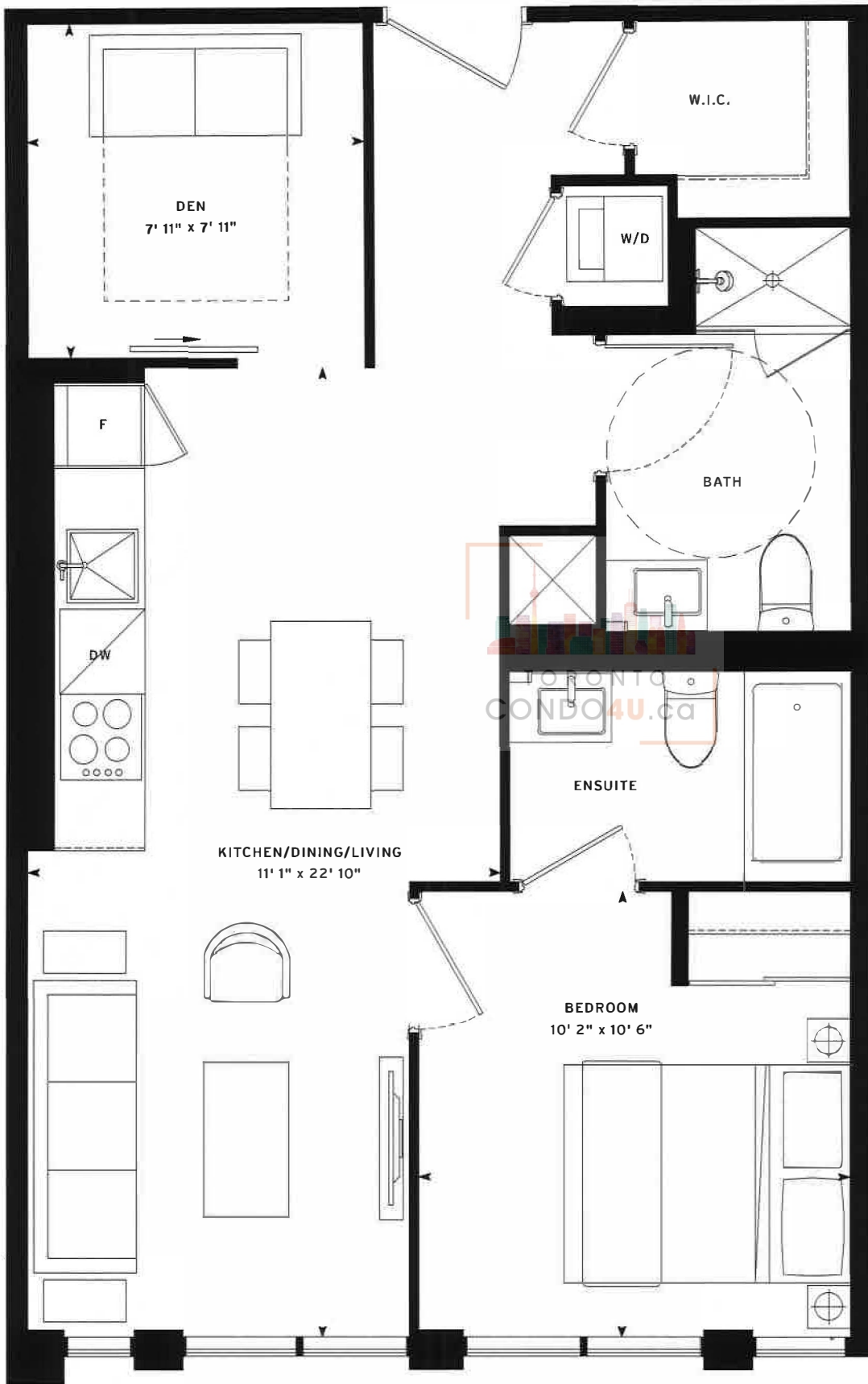
**N°**  
**555**  
**MERCER**





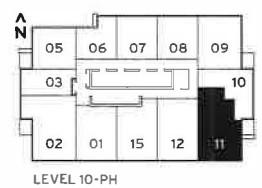
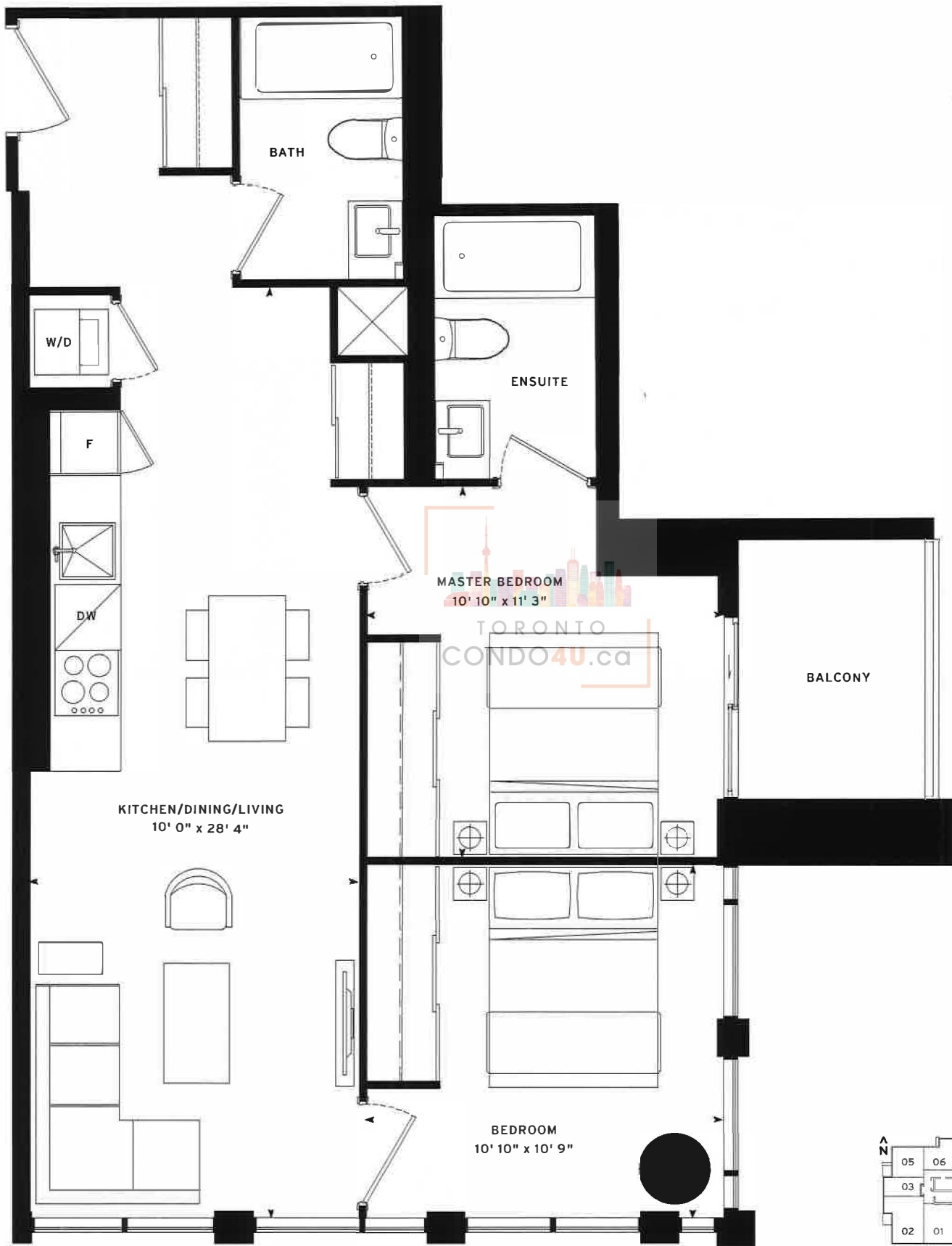
**MERCER 12**  
**1 BED PLUS DEN: 657 SF**

**N°**  
**555**  
**MERCER**



MERCER 11  
2 BED: 741 SF

N<sup>o</sup>  
555  
MERCER



**MERCER 02**  
**3 BED: 821 SF**

**N<sup>o</sup>**  
**555**  
**MERCER**

